



**Genetics**  
**plus**

*all breeds online semen and embryo sale*

*Live Sale*

Friday, February 12, 2021  
6:00PM MST [www.dlms.ca](http://www.dlms.ca)

*Timed Online*

Opens: February 12, 2021 9AM  
Racehorse close-out: February 13 6PM MST  
[www.farmgatetimedauctions.ca](http://www.farmgatetimedauctions.ca)

# welcome

Welcome to the 2nd Edition of the Genetics Plus Online Semen and Embryo Sale. This year will be a little different format from last. New for 2021 we will be splitting the sale into both a Live and a Timed section. The Live section will take place on DLMS on February 12th at 6pm MST with online, phone and proxy bidding available. Please contact Mark Shologan or any one of the First Class Team for more info on any lots or if you need assistance getting set up for online bidding. The Timed section will open up at 9am MST on February 12th and will close out on February 13th at 6pm MST on DLMS Farmgate Timed Auctions with a horse race style finish.

The offering this year is extremely exciting!! On offer is a highly productive, breed leading Shorthorn donor cow, a pick of the heifer calves from a top end Simmental breeder and numerous rare and breed leading flushes, embryos and semen lots. You will find rare, exciting and program changing frozen genetics in both the live and frozen sections, in numerous different beef breeds. I would like to personally thank all of this years consignors for offering this tremendous set of frozen genetics right from the heart of their herds.

Please plan on logging on both DLMS and DLMS Farmgate Timed Auctions on both February 12th and 13th for the 2nd Edition of the Genetics Plus Online Semen and Embryo Sale. Please give anyone of the First Class Team or Mark Shologan from DLMS a call, it will be our pleasure to assist you in whatever you may need for this upcoming sale.

Wishing everyone a very successful spring sale season,

Darnell Fornwald  
First Class Cattle Marketing

## **PUREBRED SIMMENTAL GENETICS**

*Pick of the Heifer Calves Lot*  
*live sale page 7*  
*Semen Lots*  
*live sale pages 11 to 18*  
*timed online sale pages 26 to 30*  
*Embryo Lots*  
*live sale pages 8 to 11*

## **FULLBLOOD/FULL FLECK SIMMENTAL GENETICS**

*Semen Lots*  
*timed online sale pages 31 to 33*

## **BLACK ANGUS GENETICS**

*Semen Lots*  
*live sale pages 21 to 22*  
*timed online sale pages 34 to 36*  
*Embryo Lot*  
*live sale page 20*

## **RED ANGUS GENETICS**

*Semen Lots*  
*live sale page 19*  
*timed online sale pages 38 to 39*  
*Embryo Lots*  
*live sale page 19*  
*timed online sale page 37*

## **SHORTHORN GENETICS**

*Semen Lots*  
*live sale pages 4 to 5*  
*timed online sale pages 43 to 46*  
*Embryo Lots*  
*live sale page 4*

## **MAINE-ANJOU GENETICS**

*Semen Lots*  
*timed online sale page 42*

## **CLUB CALF GENETICS**

*Semen Lots*  
*live sale page 26*  
*timed online sale page 41*

## **CHAROLAIS GENETICS**

*Semen Lots*  
*live sale page 23*  
*timed online sale page 40*

## **WAGYU GENETICS**

*Semen Lot*  
*timed online sale page 40*

## **HEFEFORD GENETICS**

*Semen Lot*  
*live sale page 6*

## **LIMOUSIN GENETICS**

*Semen Lot*  
*timed online sale page 36*

## **SPECKLE PARK GENETICS**

*Semen Lot*  
*timed online sale page 43*

# index



# Genetics plus

*online semen and embryo sale*

Live Sale on [www.DLMS.ca](http://www.DLMS.ca)  
Saturday, February 12, 2021 6:00 PM MST

Timed Online Sale  
on [www.farmgatetimedauctions.ca](http://www.farmgatetimedauctions.ca)  
Sale opens Friday, February 12 9:00 AM MST  
Racehorse close-out starts  
Saturday, February 13 at 6:00 PM MST



Darnell Fornwald  
(403) 795-8030



Shay Martindale  
(780) 812-4581



Jonathan Karsin  
(204) 870-0329

*First Class*  
cattle marketing 

Box 1740, Crossfield, AB T0M 0S0  
Office: 403.795. 8030  
Email: [firstclasscattlemarketing@gmail.com](mailto:firstclasscattlemarketing@gmail.com)  
Web: [www.firstclasscattlemarketing.com](http://www.firstclasscattlemarketing.com)

## SALE DAY PHONES

Darnell Fornwald	403-795-8030
Shay Martindale	780-812-4581
Jonathan Karsin	204-870-0329
Mark Shologan, DLMS	780-699-5082
Ryan Hurlburt	306-292-9812

## For service in French, please contact

Jonathan Karsin 204-870-0329

## Pour le service ou l'information en Français, svp contactez

Jonathan Karsin 204-870-0329

## AUCTIONEER

Ryan Hurlburt 306-292-9812

## EMBRYO GUARANTEES

If implanted by certified technician:

2-3 embryos	1- 90 day pregnancy
4-5 embryos	2- 90 day pregnancies
6 embryos	3- 90 day pregnancies

## REPLACEMENT EMBRYOS

will be either the same embryos as purchased or embryos of equal value. All guarantees will be between seller and purchaser

## SHIPPING AND HANDLING

charges will be at the cost of the buyer

## HOW TO PARTICIPATE IN THIS SALE ONLINE WITH DLMS FOR LOTS 1-67

1. Visit [www.dlms.ca](http://www.dlms.ca), click the REGISTRATION link and fill out the registration form. From this page you will sign-up for a free user account and it allows you to select a username and password for use on [www.dlms.ca](http://www.dlms.ca) Already have an account, simply sign in with your username and password.
2. To be Approved for bidding on the sale - Log in to [www.dlms.ca](http://www.dlms.ca) with your username and password and click BUYER APPROVAL link located on the left hand side of the page, then click the SIGN UP button beside the sale you are interested in bidding on. We recommend that you request to bid for the sale at least 24 hours prior to the sale, we will do our best to approve you after this point but the earlier the better to confirm approval of bidding.
3. Any up to-date catalogue information & changes will be available online prior to the sale. Go to the sale page and view the up to-date sale lot info.
4. On Sale day/ Sale Time go to [www.dlms.ca](http://www.dlms.ca) and with your username and password log in to the DLMS website. After the sale broadcast has started click the VIEW SALE button on the home page for the sale you are interested in bidding on. (DLMS starts purebred sale broadcasts approximately 30 min prior to sale time and the VIEW SALE button will appear at this point when the sale broadcast is started.)
5. During the sale when the lot comes up you are interested in bidding on simply click the Bid button. When your bid has been accepted your bid button will turn RED. If the price increases and you are out bid your bid button will turn back to BLUE to stay as the high bidder you must bid again. PLEASE remember that your bid button must be RED to be the high bidder and win the lot. For more information about how the online sale will work or for any help getting approved please call:

DLMS - Mark Shologan - 780.699.5082

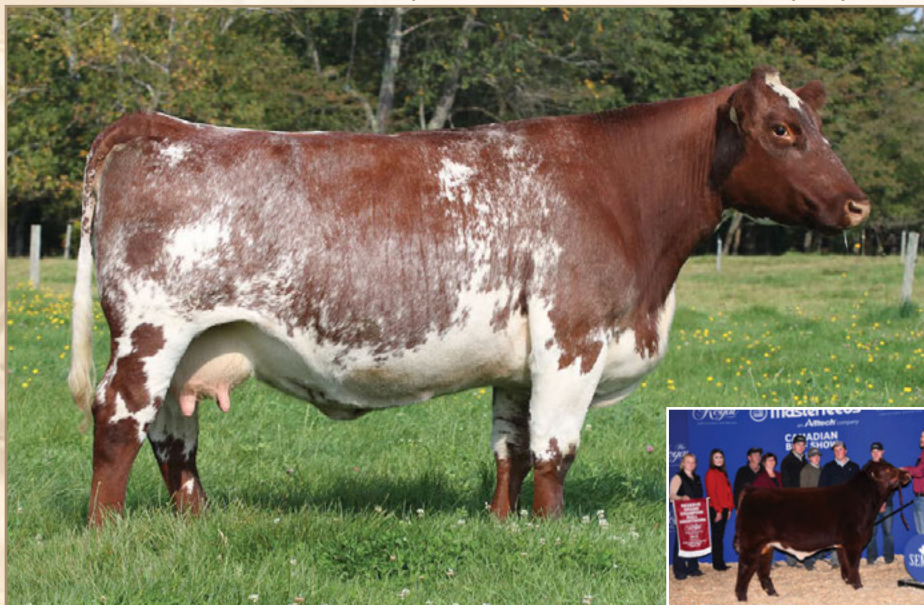
DLMS  
[www.dlms.ca](http://www.dlms.ca)



LOT 1

# MILLBROOK PERFECT REGAL 11W

Shorthorn Cow // reg# X-[CAN] 17339 96.9% // consigned by Millbrook Farms



donor pedigree

SHADYBROOK CENTURION 18L  
 sire **SHADYBROOK PERFECTION 35S**  
 SHADYBROOK PICTURE 201M

SEMAIHMUO GRINGO 9L  
 dam **SEMAIHMUO REGAL 8R**  
 BLUE RIDGE MAYFLOWER 117L

### Selling 100% ownership

An extremely rare opportunity to acquire one of the elite donors in the Shorthorn breed. A complete outlier within the breed for creating power and shape, but still right in terms of size, structure and look to be accepted at the highest levels. Regal daughters have been sought after winning at the national level. Her bulls have become herdsires for top programs, including the 2019 Reserve Toronto Royal Champion Bull. Currently open and ready to flush, don't pass on this unique opportunity. Please contact for an updated flush record. Selling 100% ownership.



daughter of 11W



daughter of 11W



daughter of 11W



daughter of 11W

LOT 2

# MILLBROOK FIREBALL 23F

Shorthorn Semen // reg# X-[CAN]\*25256 // consigned by Millbrook Farms



bull pedigree

DF WACO 6W  
 sire **HILL HAVEN FIRE STORM 28C**  
 HILL HAVEN BREATHTAKER 35Y

LCCC QS PROUD AUGUSTUS 707  
 dam **MILLBROOK DAISY'S PRIDE 18X**  
 MILLBROOK DAISY'S CHARM 7U

- One of the most popular shorthorn bulls to ever call Canada home
- Champion bull at Royal Agriculture Winter Fair 2020
- Sired the top selling female in the Northern Exposure sale with his inaugural calf crop
- Owned by Cornerstone Farms, Winchester IN. Leased to Cates Farm

**BW:** 89 lbs. // **percentage** 95.4% // **Polled** // **Semen stored at Eastgen**

**+ A:** 10 doses // Qualified: CAN  
**+ B:** 10 doses // Qualified: CAN  
**+ C:** 10 doses // Qualified: CAN

**+ D:** 10 doses // Qualified: CAN  
**+ E:** 10 doses // Qualified: CAN



dam: Millbrook Daisy's Pride 18X



daughter of Fireball: Millbrook Red Rose FB 10H  
 High selling Female Millbrook Northern Exposure Vol I



LOT 3

### 6B'S GUARDIAN ET

Shorthorn Semen // reg# X-[CAN]AR25195 // consigned by Lingley Livestock



bull pedigree

CF TRUMP X  
 sire HD BLOODSTONE 603 ET  
 NPS DESERT ROSE 004

BLUE GATE HIGH HOPE236  
 dam ASH VALLEY KENDRA 7142  
 ASH VALLEY KENT 0579

**BW:** 85 lbs. // **percentage** 90.7% // **Polled** (Homo Polled Testing) // **Semen stored at Alta Genetics**

- + **A:** 10 doses // Qualified: CAN and USA
- + **B:** 10 doses // Qualified: CAN and USA
- + **C:** 10 doses // Qualified: CAN and USA



WBL 20H daughter of Guardian

Guardian was one of the most talked about bulls in Louisville and Denver, where he was crowned the 2018 Jr Bull Champion. This bull puts together power and maternal greatness all tied together in one of the most functional, complete and stylish packages we've seen in a Shorthorn bull! Guardian is genetic defect free, big footed, long bodied and attractively made. He's got the phenotype to create that added look, extra muscle expression and tighten up front ends on looser made cattle. All calves have come unassisted, and polled even from multiple horned cows. Homo polled test pending. Resulting calves, when bred to purebred cows, will be 95% and in the purebred herdbook. Semen is stored at Alta Genetics.

LOT 4

### PROSPECT HILL CLAY 56C

Shorthorn Semen // reg# X-[CAN]M478554 // consigned by Prospect Hill Shorthorns



bull pedigree

MURIDALE HUEY 8U  
 sire BALMORAL OAKS EAGLE 9X  
 BALMORAL OAKS DORIS 1U

Gafa Highlander 23M  
 dam PROSPECT HILL RENIA 12R  
 PROSPECT HILL MINNIE 37M

**BW:** 89 lbs. // **percentage** 100% // **Polled** // **Semen stored at Alta Genetics**

- + **A:** 10 doses // Qualified: CAN and USA
- + **B:** 10 doses // Qualified: CAN and USA
- + **C:** 10 doses // Qualified: CAN and USA



Prospect Hill Ford 65F, son of Clay 56C

THF , PHA FREE, MYOSTATION FREE  
 Reserve champion mature bull over all breeds Canadian Bull Congress two years in a row. Had a great temperament was very sure footed , easy doing left us with some great offspring one of them being Ford who is sire at Joe Hunters.



LOT 5

**HAROLDSON'S SCC PAVATI 48G**

DLF IEF HYF // Hereford Semen // reg# BPTG742816 // consigned by Haroldson's Polled Herefords and First Class Marketing



bull pedigree	R LEADER 6964	HAROLDSONS WLC RHINO ET 48Y DLF HYF IEF
	sire <b>HAROLDSON'S TRACTION ET 50E</b> DLF HYF IEF MSUDF dam <b>HAROLDSON'S WSF LASSIE 48Y 42C</b>	<b>HAROLDSON'S LASSIE 425X 22Z</b> DLF HYF IEF
	HAROLDSON'S MARVEL 45P 5W DLF HYF IEF	

**BW:** 86 lbs. // **Polled** // Semen stored at Bow Valley Genetics

- + **A:** 20 doses // Qualified: CAN and USA
- + **B:** 20 doses // Qualified: CAN and USA
- + **C:** 20 doses // Qualified: CAN and USA
- + **D:** 20 doses // Qualified: CAN and USA
- + **E:** 20 doses // Qualified: CAN and USA

When we saw Haroldson's Pavati at the 2019 Canadian Western Agribition we knew he was a bull that we needed to keep an eye on. His natural muscle expression, style, foot structure and overall soundness was second to none in the Hereford show. We were then fortunate enough to acquire the semen rights on him the next spring when he commanded an impressive \$29,000. Since then he has developed beyond our expectations. He has simply grown into one of the most complete Hereford bulls that we have ever seen. Look for Pavati to add muscle, soundness, foot quality and overall style to the Hereford breed. **Homozygous Polled**

**D | L | M | S**  
www.dlms.ca

*Live Sale Lots 1-67*  
on [www.DLMS.ca](http://www.DLMS.ca)  
**Saturday, February 12, 2021 6:00 PM MST**  
*please contact any of the sales staff for more information on any of the lots on offer*

CATALOGUE WILL ONLY BE ONLINE AT  
[www.firstclasscattlemarketing.com](http://www.firstclasscattlemarketing.com)



## Sample of past Downhill females



LOT 6

## PICK OF THE HEIFER CALVES

*consigned by* Downhill Simmentals

I am excited to offer, for the first time, the pick of my 2021 heifer calf crop. Many heifers from my operation have sold through Shades of the Prairies Sale as lead off and high selling females and gone off to work in many reputable herds. Females such as DHS Ms Mackayla 41F to Boundry Ranch, DHS Ms Mountain 17E who has turned into a donor at McIntosh Ranch, DHS Ms Barbie 13B and DHS Ms Crime Scene both working at MRL, along with many others working at places such as Silverlake Farms, Mader Ranches, X-T Simmentals and this past years high seller going to Jim Sandstom at Minnedosa. Your pick will be from approximately 30 heifer calves out of the popular Wheatland Fronrunner 896F, KWA Black Mountain 279G, LFE Nighthawk and Mader Walk This Way. You can look several times at the calves throughout the year as you have until **November 30, 2021 to make your selection by.**



LOT 7

**DOUBLE BAR D ADORA 98G**

Simmental Full Fleckvieh Flush // reg# P1290448 // consigned by Sandy Hills Simmentals, Karsin Farms and First Class Cattle Marketing

donor  
pedigree
 sire **DOUBLE BAR D SPITFIRE 20X**  
**STARWEST POL BATMAN**  
 FGAF SHEENA 843Y

 dam **DOUBLE BAR D METROPOLIS**  
**DOUBLE BAR D ADORA 232A**  
 DOUBLE BAR D ADORA 38U

Double Bar D Adora was the high selling bred heifer out of the 2020 Double Bar D "Sharing the Herd" Female sale. She is a very attractive, stout, long bodied, huge ribbed polled Full Fleckvieh female that we feel has a very bright future in the Simmental breed. This female ties everything together and has since dropped a perfect udder. Offering the right to flush this future breed matron to the bull of your choice. Available to be flushed early April 2021. Flush to be done at Embryo Genetics in Morden, Manitoba. Buyer will be responsible for all flushing costs. Minimum 6 freezable Embryos guaranteed with no cap. **Polled, Full Fleck**

**+ TERMS:** Guarantee a minimum of 6 eggs. Semen and flush costs to be paid by the purchaser.

LOT 8

**MMWK SYRUP 58F**

Simmental Purebred Flush // reg# BPG1273170 // consigned by First Class Cattle Marketing

donor  
pedigree
 sire **KOP CROSBY 137W**  
**SPRINGCREEK LOTTO 52Y**  
 SPRINGCREEK BLK TESS 25T

 dam **MRL 38X**  
**MMWK 38A**  
 PRL SYRUP 381S

Syrup is the picture perfect Simmental female. She is big volumed, extremely stout, feminine and long bodied with a perfect udder and foot structure. She did an amazing job with the her first calf and has an extremely productive future going forward in the Simmental breed. This is an opportunity you will not want to miss. Syrup is currently at DRI and is ready to flush. Buyer will be responsible for all flushing costs. Minimum 6 freezable embryos guaranteed with no cap. **Homo Polled**

**+ TERMS:** Guarantee a minimum of 6 eggs. Semen and flush costs to be paid by the purchaser.



daughter of Syrup 58F: MMWK 58H



Lot 9

### MMWK SYRUP 58F

Simmental Purebred Embryos // reg# BPG1273170 // consigned by First Class Cattle Marketing



donor pedigree

KOP CROSBY 137W  
sire **SPRINGCREEK LOTTO 52Y**  
SPRINGCREEK BLK TESS 25T

MRL 38X  
dam **MMWK 38A**  
PRL SYRUP 381S

This mating of MMWK Syrup and Crossroads Connected could very well result in some of the greatest Simmental progeny on the market. The pure elegance and femininity of Syrup combined with the power and muscle of Connected will be a home run, not to mention both parents are sound with perfect feet and are backed by tremendous cow families and maternal power. **Homo Polled**

+ A: 3 Embryos by Crossroad Connected 12G // Qualified: EEC, AUS, USA and CAN stored at Davis-Rairden



sire A: Crossroad Connected 12G

Lot 10

### CIRCLE G RED MAGIC 840F

Simmental Purebred Embryos // reg# PG1251227 // consigned by First Class Cattle Marketing and Swan Lake Farms



donor pedigree

SVS SCOUT 25X  
sire **SVS SCOUT 665D**  
SVS RED SATIN 21Z

WXR REDPATHS KOSMO 38Z  
dam **CIRCLE G RED MAGIC 433B**  
D BAR C BLACK MAGIC 161X

Circle G Red Magic was the high selling female out of the 2019 Checkers Sale. She was selected for her overall volume, stoutness, soundness and overall foot and udder quality. Not to mention being blood red and backed by an extremely maternal pedigree we see a great future for this young female. Please take a long look here folks, these are embryos that you will not want to miss!! **Homo Polled**

- + A: 3 Embryos by Crossroad Connected 12G // Qualified: CAN // stored at Bow Valley
- + B: 5 Embryos by SVS Tycoon 841F // Qualified: AUS, USA and CAN // stored at Bow Valley
- + C: 5 Embryos by SVS Tycoon 841F // Qualified: AUS, USA and CAN // stored at Bow Valley
- + D: 5 Embryos by IPU Bentley // Qualified: AUS, USA and CAN // stored at Bow Valley
- + E: 5 Embryos by IPU Bentley // Qualified: AUS, USA and CAN // stored at Bow Valley



sire A: Crossroad Connected 12G



sire B/C: SVS Tycoon 841F



Lot 11

**KWA MS RIDDLER 130D**

Simmental Purebred Embryos // reg# BPTG1206939 // consigned by Black Beaver Syndicate and First Class Cattle Marketing



donor pedigree

LFE GOTHAM 819Y  
sire **LFE THE RIDDLER 323B**  
LFE BS CHARO 23Y

BISS TOBY 818P  
dam **DOUBLE BAR D PIXIE 75T**  
MISS R PLUS 002K

KWA MS Riddler 130D was a past high seller out of the Ashworth Farm and Ranch Female Sale. She is moderate framed but extremely stout and elegant in her front third. She has an unmatched foot structure and a picture perfect udder. With embryos sired by the great Proclamation bull, that was very well received this fall, here is a mating that is absolutely fool proof. Look at these embryos if you want to raise the next great herd bull or donor female. **Homo Polled**

+ A: 5 Embryos by WS Proclamation E202 // Qualified: EEC, AUS, USA and CAN // stored at Embryo Genetics  
+ B: 5 Embryos by WS Proclamation E202 // Qualified: EEC, AUS, USA and CAN // stored at Embryo Genetics



sire A/B: WS Proclamation E202

Lot 12

**MAF CF TARA 128E**

Simmental Purebred Embryos // reg# BPG1208767 // consigned by White Rock Ranch and First Class Cattle Marketing



donor pedigree

LFE GOTHAM 819Y  
sire **LFE THE RIDDLER 323B**  
LFE BS CHARO 23Y

WHEATLAND BULL 47X  
dam **MAF 47X TARA 152X 18Z**  
SPRINGCREEK TARA 152X

Tara 128E was the \$30,000 high selling female at the Maidens of the Meadows production sale. This stout, high capacity, big ribbed female has the power to raise the herd bulls we all love to sell yet the femininity and elegance to raise a banner winning show heifer. We believe Tara will go on to do great things in the Simmental breed. Being mated to some of the breeds very best black sires, these embryos will not want to be missed.

+ A: 5 Embryos by VCL LKC Equity 608D // Qualified: USA and CAN // stored at Bow Valley



sire B/C: VCL LKC Equity 608D



Lot 13

### JDN PRAIRIE SIGNATURE 19L

Simmental Purebred Embryos // reg# BPTG559202 // consigned by High Country Cattle Services



donor pedigree

IRISH BLACK KNIGHT  
sire **BLACK IRISH KANSAS**  
KANSAS BLACK LASS 215X

BURNS BULL X339U  
dam **LFE KATARINA 31F**  
LFE KATARINA 66D

Signature 19L is the mother to our Signature cow family that has over 20 relatives to her in our cowherd. This cow family are tremendous producers. Wheatland Hummer 468P was the first Supreme Champion Bull at Agribition and is loaded with maternal greatness. Pictured are daughters and grand daughters of Signature 19L.

- + A: 4 Embryos by Wheatland Bull 468P // Qualified: CAN // stored at Bow Valley
- + B: 3 Embryos by Wheatland Bull 468P // Qualified: CAN // stored at Bow Valley



daughters and grand daughters of JDN Prairie Signature 19L

sire A/B: Wheatland Bull 468P "Hummer"

Lot 14

### WHEATLAND FRONT RUNNER 896F

Simmental Semen // reg# PG1270196 // consigned by Downhill Simmentals



bull pedigree

WS PILGRIM H182U  
sire **CCLT ALLIANCE 91C**  
BROOKS SHINIA 1A

WHEATLAND CIRCUIT BREAKER  
dam **WHEATLAND LADY 6554D**  
WHEATLAND LADY 4242B

Frontrunner was one of the high selling bulls at the 2019 Wheatland Cattle Co Bull Sale, being purchased by Downhill Simmentals. His first set of calves are hitting the ground and are very exciting. They come easy with a moderate birth weight and lots of vigor. They are then up and running and have a ton of grow, stoutness and hair to them. Frontrunner is one of the next up and coming red calving ease sires. Don't miss this opportunity to buy him in 10 dose packages.

**BW:** 86 lbs. // **Polled Purebred** // Semen stored at Bova Tech

- + A: 10 doses // Qualified: CAN and USA
- + B: 10 doses // Qualified: CAN and USA
- + C: 10 doses // Qualified: CAN and USA
- + D: 10 doses // Qualified: CAN and USA
- + E: 10 doses // Qualified: CAN and USA



son of Front Runner at Downhill

son of Front Runner at Downhill

daughter of Front Runner



# SPRINGCREEK LAUNCH 110E

Simmental Semen // reg# PTG1194066 // consigned by Meadow Acres Simmentals



bull pedigree

RCC/TCF LINE DRIVE M181  
sire **SPRINGCREEK LINER 56U**  
NEVAS L93

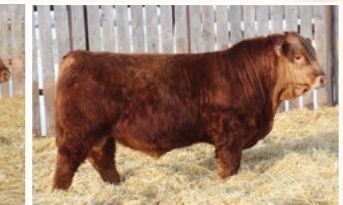
KOP CROSBY 137W  
dam **SPRINGCREEK BROOKE 68Z**  
SPRINGCREEK BROOKE 11W

If you are serious about selling red bulls have a look at this opportunity to add some of the most consistent and predictable genetics in the business. Launch is our senior herd sire that we have only sold 20 units of semen on previously. Launch is a \$50,000 red son of Liner 56U and Springcreek Brooke 68Z. He has great length of spine, muscle and commanding herd bull presence. The maternal qualities of Launch are as predictable as they come. The progeny are hairy, long bodied and powerful. The first Launch sons were well received in our bull sale last year and a very consistent sire group. The first daughters are starting to calve and they are living up to our expectations in all aspects. The udders are picture perfect and they are going to be very productive and influential females in our herd. The consistency of his pedigree and offspring make Launch a valuable and useful tool for any operation.

**BW:** 102 lbs. // **Polled Purebred** // Semen stored at Bow Valley Genetics

- + **A:** 10 doses // Qualified: AUS, USA and CAN
- + **B:** 10 doses // Qualified: AUS, USA and CAN
- + **C:** 10 doses // Qualified: AUS, USA and CAN

- + **D:** 10 doses // Qualified: AUS, USA and CAN
- + **E:** 10 doses // Qualified: AUS, USA and CAN



daughters of Springcreek Launch 110E

MAF 173G: High Selling Launch son in 2020 to Hoegl Livestock  
MAF 66H son of Launch

# KCC1 EXCLUSIVE 116E

Simmental Semen // reg# BPTG1277960 // consigned by Meadow Acres Simmentals



bull pedigree

MR NLC UPGRADE U8676  
sire **MR TR HAMMER 308A ET**  
SVF/HS EXPECTING A DREAM

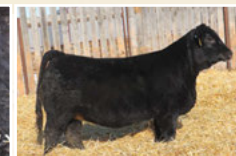
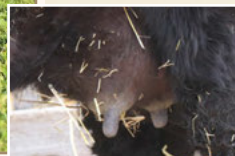
CLO LTS ENTOURAGE 72T  
dam **TKCC VICTORIA 57A**  
FORD RJ DOLLY Y83

A rare opportunity to add Exclusive to your spring breeding plans. When we saw Exclusive as part of the champion purebred pen of three bulls in Denver, I knew we wanted to be apart of this exciting young sire. He sold at Fort Worth Stock Show for \$120,000 for half interest and we were fortunate to buy the Canadian semen rights on him. We are now calving out our third calf crop of Exclusive's and they are impressive! We had a small group of calves his first year, which included our high selling bull in 2020 to Outlaw, Sevick & M&J. We have a larger group of sons for our bull sale on March 17th, that will be sure to garner much attention. We have found that the calves are moderate at birth and have explosive growth with extremely impressive spread from birth to weaning. They have tons of muscle shape and expression with lots of middle and style. The feet on these calves are outstanding and udders are picture perfect. Exclusive moderates birth weight, frame and adds style. He is versatile and we have used him successfully on cows and heifers have been pleased with the results in each scenario. Exclusive is a sire that we will be utilizing in our program for many years due to all the positive attributes he offers. Do not miss out on this unique opportunity.

**BW:** 87 lbs. // **Polled Purebred** // Semen stored at Bow Valley Genetics

- + **A:** 10 doses // Qualified: CAN
- + **B:** 10 doses // Qualified: CAN
- + **C:** 10 doses // Qualified: CAN

- + **D:** 10 doses // Qualified: CAN
- + **E:** 10 doses // Qualified: CAN



daughter of KCC1 Exclusive MAF 6H: Exclusive daughter MAF 8H: Exclusive son

MAF 148G: High selling Exclusive to Outlaw, Sevick & M&J in 2020



LOT 17

**KOP SPARTAN 113A**

Simmental Semen // reg# PG791081 // consigned by High Country Cattle Services



bull pedigree

TNT POWER SURGE T404  
sire **MRL HIGH VOLTAGE 155X**  
MRL MISS 371T

KOP CROSBY 137W  
dam **KOP MS CROSBY 43Y**  
KOP MS WHEATIE 52U

Spartan is one of those bulls that do not come around every day and if your lucky you might get to own one like him. He is athletic, super sound and passes on great beef cattle. His sons and daughters have moved our program to another level. His daughters are the best Simmental females I have ever owned or worked with. Impeccable udders, super sound structured, and extremely fertile. This is the first semen ever offered on him. Champion Simmental Bull Agribition 2015. Homo Polled Non Diluter

**BW: 100 lbs. // Homo Polled Purebred // Semen stored at Bow Valley Genetics**

- + **A:** 5 doses // Qualified: USA and CAN
- + **B:** 5 doses // Qualified: USA and CAN
- + **C:** 5 doses // Qualified: USA and CAN
- + **D:** 5 doses // Qualified: USA and CAN



daughters of KOP Spartan 113A

Spartan 113A: Champion Bull Agribition

LOT 18

**JB CDN CAPTAIN CALL 1948**

Simmental Full Fleckvieh Semen // reg# P1283253 // consigned by Ford Land & Cattle



bull pedigree

DOUBLE BAR D CHESAPEAKE  
sire **DOUBLE BAR D CHISHOLM 37A**  
DOUBLE BAR D BONNIE 332U

JB CDN VINDICATOR 1215  
dam **JB CDN FIESTA 1491**  
JB CDN FREYSIA 4079

**BW: 99 lbs. // Polled Full Fleckvieh Non-Diluter // Semen stored at Bow Valley Genetics and Hawkeye**

Here's a special opportunity to add what might be a valuable piece to your polled Fleckvieh puzzle! Derived from over 97% proven horned genetics, Captain's polled gene could be a very nice compliment to a wide variety of females in the breed gene pool. From a strong cow family that has already placed herd sires north and south of the border, Captain is dilution free, was good natured from birth, exhibited tremendous fertility at a young age, and manifests the heavy pigmentation bred into both sides of his pedigree. Modern in his design, he's easy to appreciate for his tidier front, his deep middle third, and his expressive rear quarter. A bull bred to be user friendly, it might be a good time to get on board with a bull bred with the future in mind!



dam: JB CDN Fiesta 1491

- + **A:** 10 doses // Qualified: USA and CAN
- + **B:** 10 doses // Qualified: USA and CAN
- + **C:** 10 doses // Qualified: USA and CAN
- + **D:** 10 doses // Qualified: USA and CAN
- + **E:** 10 doses // Qualified: USA and CAN



Lot 19

### FAIRVIEW PHILOSOPHY 99E

Simmental Full Fleckvieh Semen // reg# P1221002 // consigned by **Forden Fairview Farms and Creekside Cattle Co.**



bull pedigree

ANCHOR D VIPER 103W  
*sire* **BEE PHANTOM 79B**  
 BEECH BRO SHE DEVIL 12S

LHVS COMMANDER 59X  
*dam* **STARWEST POL ARIEL**  
 PARVIEW'S MISS FROSTY 55X

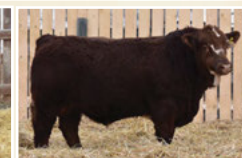
Here is an opportunity to access some exciting Homo Polled Fleckvieh genetics which have been held exclusive prior to now. Fairview Philosophy sold for \$20,000, for half interest, in 2018. A select few packages were offered in 2019/2020 and has been used by some of the most progressive Canadian Simmental herds. Polled, powerful, pigmented, versatile, and consistent are a few words to describe Philosophy. Philosophy is a unique combination of polled power, performance and heavy pigment that the fullblood industry has been seeking. Structurally, Philosophy is extremely long bodied, with a smooth front shoulder and an attractive skull shape, making him a good mating choice on heifers, yet powerful enough to use on the herd building cows. He's always remained easy fleshing, with a sound make up and good foot underneath him. Philosophy adds pigment, darkens the color off his offspring, and most offspring come stamped with his distinctive dark red brockle. In multiple herds across Canada his progeny, both bulls and heifers, rise to the top of their respective pens, and females that sold carrying his service commanded a premium at sales this past fall. In his pedigree you see breed legends such as Anchor D Viper, LHVS Commander and the prolific matron Beech Bro She Devil. His first daughters are calving now and they have impeccable udders. This will be the only semen to sell in packages of less than 10 doses in 2021. Polled Fleckvieh cattle are in high demand and accessing this semen is an opportunity to not be missed.

**BW:** 89 lbs. // **Homo Polled 100% Full Fleckvieh Non Diluter** // Semen stored at Bow Valley

- + **A:** 5 doses // Qualified: CAN
- + **B:** 5 doses // Qualified: CAN
- + **C:** 5 doses // Qualified: CAN
- + **D:** 5 doses // Qualified: CAN
- + **E:** 5 doses // Qualified: CAN



daughter of Philosophy at Creekside Cattle Co.



son of Philosophy at Crossroad Farms

Lot 20

### DOUBLE BAR D BLUE STORM 11E

Simmental Full Fleckvieh Semen // reg# PT1206806 // consigned by **Ford Land & Cattle**



bull pedigree

ANCHOR "T" RUSTY 59G  
*sire* **STARWEST POL BLUEPRINT**  
 PHS HOMOZYGOUS XCEPTIONAL

FUNDER STORM 8Y  
*dam* **DOUBLE BAR D SUZE 70Z**  
 DOUBLE BAR D SUZETTE 201S

**BW:** 87 lbs. // **Polled Full Fleckvieh Non-Diluter** // Semen stored at Alta and Hawkeye

Blue Storm 11E was the "pick of the litter" of a tremendous flush at Double Bar D Farms bull sale in 2018. He elevates to the modern style, balance, perfect foot design, length, tidy head, and pedigree diversified. His young dam has already marked her place in production from both a phenotype and performance perspective. Blue Storm progeny possess desirable and profitable carcass traits that contribute to the Ford Land & Cattle custom beef program. Semen available for US and Canada. Heifer Safe



dam: Double Bar D Suze 70Z



hind view of Blue Storm 11E

- + **A:** 10 doses // Qualified: USA and CAN
- + **B:** 10 doses // Qualified: USA and CAN
- + **C:** 10 doses // Qualified: USA and CAN
- + **D:** 10 doses // Qualified: USA and CAN
- + **E:** 10 doses // Qualified: USA and CAN





MR CCF VISION



IPU BENTLEY 81F



BGS/BM CAPTAIN SCREAM 63D



SVS CAPTAIN MORGAN 11Z

**LOT 21** **MR CCF VISION** // Sexed Female Simmental Semen  
*reg#* BPTG1142690 // *consigned by* Cornerstone Cattle Co.

*bull pedigree* *sire* MR NLC UPGRADE U8676 *dam* GCF MISS ELSA  
 + A: 3 doses // Qualified: CAN // stored at Bow Valley

**LOT 22** **MR CCF VISION** // Simmental Semen  
*reg#* BPTG1142690 // *consigned by* Downhill Simmentals and Horner Cattle Co.

*bull pedigree* *sire* MR NLC UPGRADE U8676 *dam* GCF MISS ELSA  
 + A: 5 doses // Qualified: CAN

**LOT 23** **IPU BENTLEY 81F** // Simmental Semen  
*reg#* BPG1253150 // *consigned by* Cornerstone Cattle Co.

*bull pedigree* *sire* WHEATLAND BENTLEY 630D *dam* CLAYHILL FANCY LUCA 39A  
 + A: 4 doses // Qualified: CAN  
 + B: 4 doses // Qualified: CAN

**LOT 24** **BGS/BM CAPTAIN SCREAM 63D** // Simmental Semen  
*reg#* PTG1173662 // *consigned by* Josh Nevills

*bull pedigree* *sire* SVS CAPTAIN MORGAN 11Z *dam* RF SCREAM 215Z  
 + A: 5 doses // Qualified: CAN  
 + B: 5 doses // Qualified: CAN

**LOT 25** **SVS CAPTAIN MORGAN 11Z** // Simmental Semen  
*reg#* BPTG766965 // *consigned by* Karsin Farms

*bull pedigree* *sire* HARVIE JDF WALLBANGER111X *dam* SUNNYVALLEY BLK JENNA 88U  
 + A: 3 doses // Qualified: CAN

**LOT 26** **DRAKE POKER FACE 2X** // Simmental Semen  
*reg#* BPG729546 // *consigned by* Downhill Simmentals

*bull pedigree* *sire* JS SURE BET 4T *dam* DRAKE TULA 1R  
 + A: 3 doses // Qualified: CAN





W/C BANKROLL 811D



REMINGTON LOCK N LOAD



LFE GAME FACE 338F



VCL LKC DAGGER 605D



VCL LKC EQUITY 608D



CCLT ALLIANCE 91C

LOT 27

**W/C BANKROLL 811D** // Simmental Semen  
*reg#* BPTG1217569 // *consigned by* Horner Cattle Co.

*bull pedigree* *sire* W/C LOADED UP 1119Y *dam* MISS WERNING KP 8543U  
 + A: 3 doses // Qualified: CAN

LOT 28

**REMINGTON LOCK N LOAD** // Simmental Semen  
*reg#* BPTG709087 // *consigned by* Swan Lake Farms

*bull pedigree* *sire* REMINGTON ON TARGET 2S *dam* BAR 15 MISS KNIGHT78E-51G  
 + A: 7 doses // Qualified: CAN

LOT 29

**LFE GAME FACE 338F** // Simmental Semen  
*reg#* BPG1239216 // *consigned by* Cornerstone Cattle Co.

*bull pedigree* *sire* LFE CASH 386D *dam* LFE BS AMBER 60D  
 + A: 2 doses // Qualified: CAN // stored at Bow Valley

LOT 30

**VCL LKC DAGGER 605D** // Simmental Semen  
*reg#* BPG1212189 // *consigned by* Swan Lake Farms

*bull pedigree* *sire* PROFIT *dam* BF MISS CRYSTEEL TANGO  
 + A: 10 doses // Qualified: CAN

LOT 31

**VCL LKC EQUITY 608D** // Simmental Semen  
*reg#* BPTG1210299 // *consigned by* Cornerstone Cattle Co.

*bull pedigree* *sire* PROFIT *dam* BF MISS CRYSTEEL TANGO  
 + A: 5 doses // Qualified: CAN // stored at Bow Valley

LOT 32

**CCLT ALLIANCE 91C** // Simmental Semen  
*reg#* BPG1214539 // *consigned by* Arrow Creek Simmentals

*bull pedigree* *sire* WS PILGRIM H182U *dam* BROOKS SHINIA 1A  
 + A: 5 doses // Qualified: CAN





KOP CROSBY 137W



TNT BOOTLEGGER Z268



MRL RED FORCE 12U



WLE UNO MAS X549



CCR COWBOY CUT 5048Z



TKCC CARVER 65C

LOT 33

**KOP CROSBY 137W** // Simmental Semen  
*reg#* PG718093 // *consigned by* Arrow Creek Simmentals

*bull pedigree* *sire* MUIRHEAD LIVE WIRE 95R *dam* KOP MS BENGIE 6P  
 + A: 3 doses // Qualified: CAN

LOT 34

**TNT BOOTLEGGER Z268** // Simmental Semen  
*reg#* PG782330 // *consigned by* Karsin Farms

*bull pedigree* *sire* DCR MR MOON SHINE X102 *dam* TNT MISS W70  
 + A: 3 doses // Qualified: CAN

LOT 35

**MRL RED FORCE 12U** // Simmental Semen  
*reg#* PG697657 // *consigned by* Downhill Simmentals

*bull pedigree* *sire* HOOKS SHEAR FORCE 38K *dam* MRL MISS 824S  
 + A: 4 doses // Qualified: CAN

LOT 36

**WLE UNO MAS X549** // 7/8 Simmental Semen  
*reg#* BPTRS1141301 // *consigned by* Coalview Livestock

*bull pedigree* *sire* CNS DREAM ON L186 *dam* SHAWNEE MISS 770P  
 + A: 9 doses // Qualified: CAN // stored at Millennium Genetics

LOT 37

**CCR COWBOY CUT 5048Z** // Simmental Semen  
*reg#* BPTG790139 // *consigned by* First Class Cattle Marketing

*bull pedigree* *sire* TRIPLE C SINGLETARY S3H *dam* CCR MS 4045 TIME 7322T  
 + A: 10 doses // Qualified: CAN

LOT 38

**TKCC CARVER 65C** // Simmental Semen  
*reg#* BPTRS1199412 // *consigned by* Meadow Acres Simmentals

*bull pedigree* *sire* WS PILGRIM H182U *dam* FORD RJ DOLLY Y83  
 + A: 5 doses // Qualified: CAN // stored at Bow Valley





W/C WIDE TRACK 694Y



LRX BLACKHAWK 16D



MRL THE STARTER 39C

Lot 39

**LFE EXPLORER 388C** // Simmental Semen  
 reg# PG1148001 // consigned by Karsin Farms

bull pedigree sire **MRL DISCOVERY 21A** dam **KHG TALIA 45Y**  
 + A: 5 doses // Qualified: CAN

Lot 40

**W/C WIDE TRACK 694Y** // Simmental Semen  
 reg# BPG782169 // consigned by Swan Lake Farms

bull pedigree sire **3C W/C RIGHT TRACK W9462** dam **MISS WERNING 694S**  
 + A: 10 doses // Qualified: CAN  
 + B: 10 doses // Qualified: CAN

Lot 41

**LRX BLACKHAWK 16D** // Simmental Semen  
 reg# BPG1191380 // consigned by Swan Lake Farms

bull pedigree sire **SPRINGCREEK LINER 104S** dam **MUIRHEADS GEMSTONE 6Y**  
 + A: 7 doses // Qualified: CAN

Lot 42

**MRL THE STARTER 39C** // Simmental Semen  
 reg# PG1139131 // consigned by Downhill Simmentals

bull pedigree sire **MRL 91Y** dam **MRL MISS 3379A**  
 + A: 5 doses // Qualified: CAN

**D | L | M | S**  
 www.dlms.ca

}

Live Sale Lots 1-67  
 on [www.DLMS.ca](http://www.DLMS.ca)

Friday, February 12, 2021 6:00 PM MST

please contact any of the sales staff for more  
 information on any of the lots on offer

}

CATALOGUE WILL ONLY BE ONLINE AT

[www.firstclasscattlemarketing.com](http://www.firstclasscattlemarketing.com)



LOT 43

**RED WRAZ GOLDIE MARIA 53A**

Red Angus Embryos // reg# 1748044 // consigned by Brylor Ranch



donor pedigree

RED FINE LINE MULBERRY 26P  
sire **RED BRYLOR JKC GHOST RIDER108Y**  
RED BRYLOR CHEROK 22L

RED BUF CRK ROMEO L081  
dam **RED WRAZ MARIA 12T**  
RED D.J. MISS GOLDIE 3R

I think the world of this big, wide made tank of a cow. She could quite possibly be Ghost Rider's most powerful daughter...and there has been some awfully good ones. Maria 53A started out as the high selling female in the 2013 Keystone Klassic Sale as a heifer calf for \$7000. She has proven to be able to produce with the best of them.

One of her natural heifer calves now resides in Arkansas at Two Step Cattle Co for \$14 000 USD. A son of hers very recently sold in the Brylor 50th Anniversary Bull Sale for \$21 000 as well. In fact, Red Brylor Red Vision 127G was the lead-off bull in that sale.

The sire of these embryos, Red Brylor OTM Franchise 149F, was the high selling bull in Brylor's 49th bull sale at \$27 000 to Wraz and Red Ember. He is a son of the \$105 000 USD bull, 9 Mile Franchise 6305.

149F's dam, Reba 49D, is one of Brylor's/OTM's most intriguing young donor cow. Guaranteed 2 90 day pregnancies if implanted by a certified technician

+ A: 4 Embryos by Red Brylor OTM Franchise 149F // Qualified: EEC, AUS, USA and CAN // stored at Davis Raiden



sire A: Red Brylor OTM Franchise 149F

LOT 44

**RED COCKBURN ASSASSIN 624D**

Red Angus Semen // reg# 1942328 // consigned by Brylor Ranch



bull pedigree

RED LSF SAGA 1040Y  
sire **RED PIE SPECIALIST 430**  
RED PIE PLAYMATE 232

RED LAZY MC HUSTLE 18T  
dam **RED COCKBURN CORA 254Z**  
RED WILBAR CORA 443P

Selling the last 50 straws to be made available of Assassin for the up-coming 2021 spring breeding season in Canada. We have sold 100 straws so far in the fall of 2020 and it has been very well received by Red Angus breeders all over Canada. It has averaged right at \$200 a dose on this incredibly popular herd bull. His sons have averages nearly \$10 000 in the last 2 Brylor Bull Sales and his daughters were over \$8000 in the 2020 TWAV Sale. He started his career as a \$77 500 purchase by Brylor in 2017 and he now resides in Wawota, SK with our new partner Phil Birnie at Wraz Red Angus. Two years in a row a son of Assassin has topped Phil's bull sale – one at \$17 000 and the other at \$10 000.

When it is all said and done, I do believe this bull will write his own chapter in the history books. If you haven't acquired a semen package on Assassin yet, this is your last chance to do so. Only semen to sell for the 2021 breeding season.

- + A: 10 doses // Qualified: USA and CAN // stored at Alta
- + B: 10 doses // Qualified: USA and CAN // stored at Alta
- + C: 10 doses // Qualified: USA and CAN // stored at Alta
- + D: 10 doses // Qualified: USA and CAN // stored at Alta
- + E: 10 doses // Qualified: USA and CAN // stored at Alta



Red Cockburn Assassin as a yearling



LOT 45

**JPM QUEEN RUTH 13E**

Black Angus Embryos // reg# 1955565 // consigned by JPM Farms



donor pedigree

Sire S A V HARVESTOR 0338  
**S A V INTERNATIONAL 2020**  
 S A V EMBLYNETTE 5483

Dam LLB BRUTE  
**GEIS QUEEN RUTH 1'04**  
 CRESCENT CREEK QUEEN RUTH 27F

On offer is three conventional embryos from our great Queen Ruth cow family. The dam, JPM Queen Ruth 13E is a full sibling to our high seller and 2017 Agribition Presidents Class entry, JPM Letterman 10E owned by Schick Family Farms. HA Counselor 5118, owned by Rob Garner of Nordal, Counselor is a great outcross pedigree. His dam is the HA Ever Lady 1575 who sold in Hinman Angus's 2018 Female Sale. Guarantee of one 90 day pregnancy if implanted by a certified embryologist.

+ A: 3 Embryos by HA Counselor 5118 // Qualified: USA and CAN // Stored at Bow Valley



sire A: HA Counselor 5118

**Genetics**  
**plus**  
*online semen and embryo sale*

CATALOGUE WILL ONLY BE ONLINE AT  
*www.firstclasscattlemarketing.com*  
 please contact any of the sales staff for  
 more information on any of the  
 lots on offer





S A V RAINDANCE 6848



TC STOCKMAN 365



S A V DENSITY 4336



BUBS SOUTHERN CHARM AA31



SITZ ALLIANCE 6595



S A V BISMARCK 5682

LOT 46

**S A V RAINDANCE 6848** // Black Angus Sexed Female Semen

reg# 2055106 // consigned by JPM Farms

bull pedigree sire **COLEMAN CHARLO 0256**  
+ A: 7 doses // Qualified: CAN

dam S A V BLACKCAP MAY 4136

LOT 47

**TC STOCKMAN 365** // Black Angus Semen

reg# 876845 // consigned by Severtson Land & Cattle

bull pedigree sire **TC STOCKMAN**  
+ A: 5 doses // Qualified: CAN  
+ B: 5 doses // Qualified: CAN

dam TC PRIDE 0014

LOT 48

**S A V 004 DENSITY 4336** // Black Angus Semen

reg# 1266311 // consigned by Horner Cattle Co.

bull pedigree sire **S A V 8180 TRAVELER 004**  
+ A: 10 doses // Qualified: CAN

dam S A V MAY 7238

LOT 49

**BUBS SOUTHERN CHARM AA31** // Black Angus Semen

reg# 2076642 // consigned by JPM Farms

bull pedigree sire **SILVEIRAS CONVERSION 8064**  
+ A: 10 doses // Qualified: CAN

dam HICKORY HILL ERICA 009

LOT 50

**SITZ ALLIANCE 6595** // Black Angus Semen

reg# 1036949 // consigned by Severtson Land & Cattle

bull pedigree sire **SITZ TRAVELER 8180**  
+ A: 3 doses // Qualified: CAN

dam SITZ BARBARAMERE JET 2698

LOT 51

**S A V BISMARCK 5682** // Black Angus Semen

reg# 1369591 // consigned by JPM Farms

bull pedigree sire **G A R GRID MAKER**  
+ A: 10 doses // Qualified: CAN  
+ B: 10 doses // Qualified: CAN

dam S A V ABIGALE 0451



**LOT 52 HA COUNSELOR 5118** // Black Angus Semen  
*reg# 1963239 // consigned by JPM Farms*

bull pedigree *sire* CONNEALY COUNSELOR *dam* HA EVER LADY 1575  
 + A: 10 doses // Qualified: CAN



HA COUNSELOR 5118



ANGUS ACRES HEADS UP 137R



R B TOUR OF DUTY 177



S A V PIONEER 7301



S A V PEDIGREE 4834



S A V SENSATION 5615

**LOT 53 ANGUS ACRES HEADS UP 137R** // Black Angus Semen  
*reg# 1284887 // consigned by Fleury Cattle Co.*

bull pedigree *sire* ANGUS ACRES HEADS UP 165L *dam* LAZY J BARDELLA LASS 37G  
 + A: 10 doses // Qualified: CAN // stored at Bouchard Livestock  
 + B: 10 doses // Qualified: CAN // stored at Bouchard Livestock  
 + C: 10 doses // Qualified: CAN // stored at Bouchard Livestock  
 + D: 10 doses // Qualified: CAN // stored at Bouchard Livestock

**LOT 54 ANGUS ACRES WINSTON 249B** // Black Angus Semen  
*reg# 742146 // consigned by Fleury Cattle Co.*

bull pedigree *sire* ANGUS ACRES WINSTON 198X *dam* ANGUS ACRES LADY ALLEGRA 58U  
 + A: 10 doses // Qualified: CAN // stored at Alta Genetics  
 + B: 10 doses // Qualified: CAN // stored at Alta Genetics  
 + C: 10 doses // Qualified: CAN // stored at Alta Genetics  
 + D: 10 doses // Qualified: CAN // stored at Alta Genetics

**LOT 55 R B TOUR OF DUTY 177** // Black Angus Semen  
*reg# 1829420 // consigned by Severston Land & Cattle*

bull pedigree *sire* WERNER WAR PARTY 2417 *dam* B A LADY 6807 305  
 + A: 10 doses // Qualified: CAN

**LOT 56 S A V PIONEER 7301** // Black Angus Semen  
*reg# 1481377 // consigned by Horner Cattle Co.*

bull pedigree *sire* SILVEIRAS CONVERSION 8064 *dam* HICKORY HILL ERICA 009  
 + A: 10 doses // Qualified: CAN

**LOT 57 S A V PEDIGREE 4834** // Black Angus Semen  
*reg# 1892347 // consigned by JPM Farms*

bull pedigree *sire* S A V PIONEER 7301 *dam* S A V BLACKCAP MAY 4136  
 + A: 10 doses // Qualified: CAN

**LOT 58 S A V SENSATION 5615** // Black Angus Semen  
*reg# 1943126 // consigned by JPM Farms*

bull pedigree *sire* S A V REGISTRY 2831 *dam* S A V BLACKCAP MAY 4136  
 + A: 10 doses // Qualified: CAN  
 + B: 9 doses // Qualified: CAN



LOT 59

**HOODOO DIAMOND 001**

Charolais Semen // reg# MC320375 // consigned by Winn Man Farms



**WINN MANS ROBYN 839U**  
Daughter of Hoodoo Diamond 001



**MCL 839E** - daughter of Robyn 839U  
sold for \$9750 to Shane and Levi Quist

bull pedigree  
HOODOO 5076  
sire **HOODOO CROOK 7118**  
MISS HOODOO ZT036

HOODOO 8083  
dam **HOODOO ZK111**  
MISS ORTEL OZ/105

Winn Man Farms is offering 50 straws of Hoodoo Diamond 001. Hoodoo was sourced from the Hoodoo Ranch in Texas. The Hoodoo Diamond females are the best kept secret at Winn Man with many still in production. At the final bull sale in 2015 A pick of the Cow Herd Commanded \$20,000 to McCaw Livestock and too no surprise a Hoodoo daughter was chosen. The Hoodoo bred females are notorious for working in extreme weather conditions from the Heatwaves of the southern United States to rough terrain and harsh climate of northern Manitoba. Buy with confidence this is a true outcross opportunity!

**Dehorned Purebred // Semen stored at Alta Genetics**

- + **A:** 10 doses // Qualified: CAN
- + **B:** 10 doses // Qualified: CAN
- + **C:** 10 doses // Qualified: CAN
- + **D:** 10 doses // Qualified: CAN
- + **E:** 10 doses // Qualified: CAN

LOT 60

**JWX FLIGHT ZONE 619F**

Charolais Semen // reg# PMC753285 // consigned by Blair Campbell



**JWX FLIGHT ZONE 619F**



**JWX FLIGHT ZONE 619F**  
sale day picture

bull pedigree  
WCR COUNTY LINE 3132 P  
sire **WCR COMMISSIONER 593 P**  
WCR MS BRAVO 399 P

SILVERSTREAMEVOLUTION E  
dam **JWX DAYDREAM 619D**  
JWX ABBY 706A

JWX Flight Zone 619F. WCR Commissioner 593P x Silverstream Evolution E. Here is the best of both worlds, here you get in on some of the hottest genetics in the Charolais breed. JWX Flight Zone 619F is a WCR Commissioner Son who was Reserve Junior Bull Champion at 2018 Farmfair. If you are looking for an exciting opportunity to obtain the hottest genetics for your Charolais herd here is your chance JWX Flight Zone 619F. He is a calving ease bull whose father is WCR Commissioner 593 P. His half-brothers have topped bull sales in Western Canada during the fall of 2018 and spring of 2019. 2 of the top 3 bulls sold in the Charolais Breed from the fall of 2018 to the spring of 2019 were sired by WCR Commissioner 593 P. His half-brothers have dominated bull sales in Western Canada in the fall of 2018 and spring of 2019.

On his mother's side JWX Flight Zone 619F has Silverstream Evolution a New Zeland outcross who's Canadian Semen Rights were obtained by Wilgenbusch Charolais of Saskatchewan. 3 of his mother's half-sisters were sold high selling heifer calves at Wilgenbusch Volume 1 sale in December 2015. (High Selling Heifer Calves JWX Candy 983C, sired by Silverstream Evolution. Sold for \$18,000 to Wacey McCaw, Whitewood, JWX Cameo 23C, sired by Silverstream Evolution. Sold for \$17,500 to Elder Charolais, Coronach, JWX Cloud Nine 46C, sired by Silverstream Evolution. Sold for \$17,500 to Elder Charolais). JWX Flight Zone 619F is a calving ease bull with added performance. JWX Flight Zone 619F was also the Reserve Champion at the Edmonton Agribition in the fall of 2018. JWX Flight Zone 619F is also Homozygous Polled and has the Leptin TT gene.

**Polled Purebred // Semen stored at DMV GenetiQ, Quebec**

- + **A:** 10 doses // Qualified: USA and CAN
- + **B:** 10 doses // Qualified: USA and CAN
- + **C:** 10 doses // Qualified: USA and CAN
- + **D:** 10 doses // Qualified: USA and CAN
- + **E:** 10 doses // Qualified: USA and CAN



LOT 61

**MAN AMONG BOYS** // Club Calf Semen  
consigned by **Horner Cattle Co.**

bull pedigree sire **MONOPOLY** dam **59T (HARD CORE)**  
+ A: 7 doses // Qualified: CAN



MAN AMONG BOYS



FU MAN CHU



DAKOTA GOLD



WALKS THIS WAY



WALKS ALONE



ONE IN THE CHAMBER

LOT 62

**FU MAN CHU** // Club Calf Semen  
consigned by **Horner Cattle Co.**

bull pedigree sire **MONOPOLY** dam **BOUNTY HUNTER**  
+ A: 7 doses // Qualified: CAN

LOT 63

**DAKOTA GOLD** // Club Calf Semen  
consigned by **Horner Cattle Co.**

bull pedigree sire **MONOPOLY** dam **YELLOW JACKET (WHO MADE WHO)**  
+ A: 2 doses // Qualified: CAN

LOT 64

**DAKOTA GOLD** // Club Calf Semen  
consigned by **Hlusek Farms**

bull pedigree sire **MONOPOLY** dam **YELLOW JACKET (WHO MADE WHO)**  
+ A: 5 doses // Qualified: CAN // stored at Westgen

LOT 65

**WALKS THIS WAY** // Club Calf Semen  
consigned by **Horner Cattle Co.**

bull pedigree sire **WALKS ALONE** dam **HABANERO X SUGAR RAY**  
+ A: 10 doses // Qualified: CAN  
+ B: 9 doses // Qualified: CAN

LOT 66

**WALKS ALONE** // Club Calf Semen  
consigned by **Horner Cattle Co.**

bull pedigree sire **HEAT WAVE** dam **DRAFT PICK X FULL FLUSH**  
+ A: 10 doses // Qualified: CAN

LOT 67

**ONE IN THE CHAMBER** // Club Calf Semen  
consigned by **Horner Cattle Co.**

bull pedigree sire **MAN AMONG BOYS** dam **GORETSKA 805 (ALI/HEAT WAVE)**  
+ A: 4 doses // Qualified: CAN





**LOTS 68-230 SELL ON [www.farmgatetimedauctions.ca](http://www.farmgatetimedauctions.ca)**

**SALE OPENS** Friday, February 12, 2021 at 9:00AM MST

**RACEHORSE CLOSE-OUT** begins Saturday, February 13, 2021 at 6:00PM MST

## HOW TO PARTICIPATE IN THE DLMS FARM GATE TIMED AUCTION WITH EXTENDED BIDDING:

1. Visit [www.farmgatetimedauctions.ca](http://www.farmgatetimedauctions.ca), click the LOGIN/REGISTRATION button. First time users will select the REGISTER button from this page. Fill out the registration form to sign up for a free user account and it allows you to select a username and password for use on all Farm Gate Timed auctions. This program will send you text and email messages whenever there is activity on your favorite lots or someone challenges your proxy bid and this is why you will be asked for both your current email and cell phone number. If you are a past participant in the Farm Gate Timed auctions simply enter your user name and password to continue. This takes you to a list of both current and upcoming Farm Gate Auctions.
2. You can choose your favourite lots in this sale at this time and the program will allow you to open either all sale lots or just your favorite lots on your screen. Any time there is active bidding on a lot you have identified on your favorite list you will get a text and/or an email noting this activity.
3. The program allows you to place a proxy bid on any sale lot. This in fact protects your interest in any lot of interest for you to a specified dollar value you set, when you may not be able to give 100% attention to the sale. If the lot has a \$2000 bid on it and you place a proxy bid of \$3500 into the system, the computer will bid \$2100 for you but if some one else bids \$2200, the computer will again bid for you, this time at \$2300. The system will look after your interest to a maximum of \$3500. If another bidder is on at \$3600, your proxy will no longer be effective and you will no longer have the winning bid on this lot without once again logging in and bidding again or moving your attention to a second lot of interest.
4. At closing time of the sale the entire sale will extend bidding for 5 minute if a bid is placed on any lot in the sale. Any bid received after 6 PM will extend the sale by 5 minutes from the time of that bid. When no bidding occurs for 5 min the computer will declare the sale finished.
5. First Class Cattle Marketing will invoice all buyers following the sale, please contact us if you have any questions or to arrange delivery, pick up or shipping of your purchases.

If you require assistance with using the new DLMS Farm Gate web site, if you don't understand how to create a favorites list, if you can't figure out the proxy bid or you just plain want to bid via phone, please talk to any of the DLMS team or First Class staff.

**WHAT IS RACEHORSE STYLE SALE CLOSE?** Racehorse style sale close is when the entire sale stays open in extended bidding. This type of sale allows you as the bidder to change to a different lot within the same sale if the bidding has gone in to extended bidding.

**HOW WILL EXTENDED BIDDING WORK?** When we get to the close out end time the clock for close extends with any bid placed with less than 5 min on the clock. This type of extended bidding turns the end time to more of a soft time. Extended bidding allows bidders to compete in lots like a real auction and give all bidders the same time to make a decision. Always follow the clock to see how much time remains in the sale you are interested in.



Lot 68

### CROSSROAD CONNECTED 12G

Simmental Semen // reg# BPG1266301 // consigned by Swan Lake Farms, Cornerstone Cattle Co. and First Class Cattle Marketing



bull pedigree  
 sire **CROSSROAD RED STETSON 9E** dam **PERKS BLACK DOLL 1121Y**  
 IPU MS. CODE RED 249A WFL MISS 21F DOLL 20P

Crossroad Connected 12G is the \$100,000 sensation that we purchased with Swan Lake Farms and Corner Stone Cattle Co out of last years bull sale. We saw this calf when touring Crossroad Farms in early January and immediately knew he was special. From then until bull sale we made a vast effort to get a plan in order to own this bull. Connected is extremely stout and powerful, he has a tremendous amount of top and depth of rib. Best thing of all is he has the biggest foot we have ever seen on a Simmental bull. He is extremely sound in his makeup and backed by a beautiful mamma cow. He has the perfect blaze face and no extra white. Look for Connected to add extra muscle, depth, length, milk, foot structure and soundness. The First Connected calves are hitting the ground and the reports are fantastic. The calves are coming easy with moderate birth weights, lots of vigour, hair and extra thickness and grow. Reports say he is throwing lots of blaze faces with no extra white. Do not miss out on this opportunity as this will be the ONLY SEMEN TO SELL FOR THE 2021 BREEDING SEASON. Homo Polled, Hetero Black.

**BW:** 94 lbs. // **Polled Purebred** // Semen stored at Bow Valley Genetics

- + **A:** 5 doses // Qualified: AUS, USA and CAN
- + **B:** 5 doses // Qualified: AUS, USA and CAN
- + **C:** 5 doses // Qualified: AUS, USA and CAN
- + **D:** 5 doses // Qualified: AUS, USA and CAN
- + **E:** 10 doses // Qualified: AUS, USA and CAN
- + **F:** 10 doses // Qualified: AUS, USA and CAN
- + **G:** 10 doses // Qualified: AUS, USA and CAN
- + **H:** 10 doses // Qualified: AUS, USA and CAN
- + **I:** 10 doses // Qualified: AUS, USA and CAN
- + **J:** 10 doses // Qualified: AUS, USA and CAN
- + **K:** 10 doses // Qualified: AUS, USA and CAN
- + **L:** 10 doses // Qualified: AUS, USA and CAN
- + **M:** 20 doses // Qualified: AUS, USA and CAN
- + **N:** 20 doses // Qualified: AUS, USA and CAN

Lot 69

### HFL ENDGAME 911G

Simmental Semen // reg# BPTG1274717 // consigned by River Point Cattle Co. and First Class Cattle Marketing



bull pedigree  
 sire **MRL MISSILE 138C** dam **JACKSON ROSE 23D**  
 MRL MISS 2423Z SPRINGCREEK LINNE 33R

Here is one that we are incredibly proud to stamp our name on. Endgame demanded our attention right from the day he was born, boasting a modest 90 lb birthweight at a short gestation of 280 days and quickly developing true herd bull character.

Endgame is a unique combination of such power and performance but maintains the ability to move effortlessly. Structurally he is sound made, smooth shouldered and jointed with an attractive herdbull skull. He is easy fleshing, big ribbed, with an already large scrotal. Endgame 911G is an ET son of our leading baldie donor Jackson Rose 23D, who did winning all over the country as a calf, bred and a two year old. Her accomplishments include but are not limited to being the Junior Champion calf at CWA 2016, and the Reserve Junior National Champion Female at CWA in 2017. Rose 23D spent the last 2 summers at Bow Valley Genetics undergoing IVF and impressed all who laid eyes on her. She's fault free in her makeup with a beautiful tight udder and is a proven producer. Just have a look at Endgame's sisters by Missile that we have been campaigning! We believe Endgame is going to do a lot of good for the industry.

HFL ENDGAME 911G was slapped as the All Breeds Jackpot Champion Bull at Manitoba Ag Ex, while his full sister was slapped as the Little Lady Classic All Breeds Reserve Champion Female. There is power in the blood. 870 lbs. - 205 day weight. 1,145 lbs. - October 21, 2019 weight Homo Polled Hetero Black

**BW:** 90 lbs. // **Polled Purebred** // Semen stored at Bow Valley Genetics

- + **A:** 5 doses // Qualified: USA and CAN
- + **B:** 5 doses // Qualified: USA and CAN
- + **C:** 5 doses // Qualified: USA and CAN
- + **D:** 10 doses // Qualified: USA and CAN
- + **E:** 10 doses // Qualified: USA and CAN
- + **F:** 10 doses // Qualified: USA and CAN
- + **G:** 10 doses // Qualified: USA and CAN
- + **H:** 10 doses // Qualified: USA and CAN





WHEATLAND TERMINATOR 202Z



BCLR CASH FLOW C820



TNT TANKER U263

LOT 70

**NUG ROYAL RED 324A // Simmental Semen**

reg# PTG791329 // consigned by Karsin Farms

bull pedigree

sire LFE BLACK LAKOTA 385W

dam TRIPILE C SMARTY PANTS R

+ A: 2 doses // Qualified: CAN

LOT 71

**LFE RED CASINO 3036X // Simmental Semen**

reg# PG744279 // consigned by Karsin Farms

bull pedigree

sire LFE BS LEWIS 322U

dam LFE DREAM LADY 112P

+ A: 2 doses // Qualified: CAN

LOT 72

**LFEBISS BLACKADVANCE 426U // Simmental Semen**

reg# BPG699726 // consigned by Karsin Farms

bull pedigree

sire REMINGTON ON TARGET 2S

dam LFE BILLY 80M

+ A: 5 doses // Qualified: CAN

LOT 73

**RF DOUBLE UP 37W // Simmental Semen**

reg# BPG708321 // consigned by Swan Lake Farms

bull pedigree

sire SS EBONY'S INTUITION 802

dam TLG FLIRTIN WITH YOU

+ A: 7 doses // Qualified: CAN

LOT 74

**WHEATLAND TERMINATOR 202Z // Simmental Semen**

reg# BPG768175 // consigned by Swan Lake Farms

bull pedigree

sire WHEATLAND PREDATOR 922W

dam WHEATLAND LADY 763T

+ A: 10 doses // Qualified: CAN

+ B: 10 doses // Qualified: CAN

LOT 75

**BCLR CASH FLOW C820 // Simmental Semen**

reg# BPRS1307310 // consigned by First Class Cattle Marketing

bull pedigree

sire CCR WIDE RANGE 9005A

dam BCLR MISS MONICA U820

+ A: 10 doses // Qualified: CAN

+ B: 10 doses // Qualified: CAN

LOT 76

**MRL RED WHISKEY 101B // Simmental Semen**

reg# PG1116711 // consigned by First Class Cattle Marketing

bull pedigree

sire TNT BOOTLEGGER Z268

dam MRL MISS 677Y

+ A: 1 doses // Qualified: CAN // Stored at Bow Valley

LOT 77

**TNT TANKER U263 // Simmental Semen**

reg# BPG727549-KN // consigned by Cornerstone Cattle Co.

bull pedigree

sire MR NLC SUPERIOR S6018

dam TNT MISS S17

+ A: 9 doses // Qualified: CAN // Stored at Bow Valley

LOT 78

**W/C LOADED UP 1119Y // Simmental Semen**

reg# BPTG1199413 // consigned by Cornerstone Cattle Co.

bull pedigree

sire REMINGTON LOCK N LOAD 54U

dam AUBREYS BLACK BLAZE III

+ A: 4 doses // Qualified: CAN // Stored at Bow Valley

LOT 79

**MRL CAPONE 130B // Simmental Semen**

reg# PTG1116713 // consigned by Arrow Creek Simmentals

bull pedigree

sire TNT BOOTLEGGER Z268

dam MRL MISS 836W

+ A: 10 doses // Qualified: CAN





MRL MISSILE 138C



TNT TOP GUN R244



JF RANCHER 222Z

**LOT 80** **MRL CAPONE 130B** // Simmental Semen  
 reg# PTG1116713 // consigned by Cornerstone Cattle Co.  
 bull pedigree sire TNT BOOTLEGGER Z268 dam MRL MISS 836W  
 + A: 4 doses // Qualified: CAN // Stored at Bow Valley

**LOT 85** **LRX BLAZE 55Z** // Simmental Semen  
 reg# PG766392 // consigned by Arrow Creek Simmentals  
 bull pedigree sire HARVIE JDF WALLBANGER111X dam LRX RED 116U  
 + A: 5 doses // Qualified: CAN

**LOT 81** **MRL MISSILE 138C** // Simmental Semen  
 reg# BPTG1139178 // consigned by Cornerstone Cattle Co.  
 bull pedigree sire COME AS U R RED ROCKET dam MRL MISS 2423Z  
 + A: 8 doses // Qualified: CAN // Stored at Bow Valley

**LOT 86** **TNT DYNAMITE BLACK L137** // Simmental Semen  
 reg# BPG578230-KN // consigned by Arrow Creek Simmentals  
 bull pedigree sire RW BOMBER 8H dam OPPS WIS GM2  
 + A: 2 doses // Qualified: CAN

**LOT 82** **JF RANCHER 222Z** // 7/8 Simmental Semen  
 reg# BPRS1165271 // consigned by Coalview Livestock  
 bull pedigree sire R&R CHAMBERLAIN X744 dam JF EBONYS JOY 734T  
 + A: 5 doses // Qualified: CAN // Stored at Millennium Genetics

**LOT 87** **TNT TOP GUN R244** // Simmental Semen  
 reg# PG654937 // consigned by Arrow Creek Simmentals  
 bull pedigree sire TNT GUNNER N208 dam TNT MISS SADIE M68  
 + A: 10 doses // Qualified: CAN

**LOT 83** **GWS EBONYS TRADEMARK 6N** // Simmental Semen  
 reg# BPTG671309 // consigned by Horner Cattle Co.  
 bull pedigree sire WLE POWER STROKE dam NJC EBONY ANTOINETTE  
 + A: 3 doses // Qualified: CAN

**LOT 88** **MRL DISCOVERY 21A** // Simmental Semen  
 reg# BPG792160 // consigned by Arrow Creek Simmentals  
 bull pedigree sire MRL INTEGRITY 76Y dam TSN MS EDITION 55W  
 + A: 3 doses // Qualified: CAN

**LOT 84** **KS RED BY DESIGN N968** // Simmental Semen  
 reg# PTG626542 // consigned by Downhill Simmentals  
 bull pedigree sire LCHMN BODYBUILDER 7303F dam KS LYNETTE L924  
 + A: 8 doses // Qualified: CAN

**LOT 89** **SS/PRS HIGH VOLTAGE 244X** // Simmental Semen  
 reg# BPG785675 // consigned by Arrow Creek Simmentals  
 bull pedigree sire HTP/SVF DURACELL T52 dam KENCO MILEY COTTONTAIL  
 + A: 3 doses // Qualified: CAN





CNS DREAM ON L186



REMINGTON ON TARGET 2S



WHEATLAND RED HUMMER 608S

LOT 90

**WHEATLAND RED TEDDY 457P** // Simmental Semen  
*reg#* PTG622881 // *consigned by* Arrow Creek Simmentals

*bull pedigree* *sire* WHEATLAND BULL 131L *dam* WHEATLAND LADY 902J  
 + A: 10 doses // Qualified: CAN  
 + B: 10 doses // Qualified: CAN

LOT 91

**ACS RED KNIGHT 715T** // Simmental Semen  
*reg#* PG78536 // *consigned by* Arrow Creek Simmentals

*bull pedigree* *sire* WHEATLAND RED TEDDY 457P *dam* ACS MS BLACKCAT 30M  
 + A: 10 doses // Qualified: CAN

LOT 92

**WHEATLAND RED HUMMER 608S** // Simmental Semen  
*reg#* PG666755 // *consigned by* Willow Springs Stock Farms

*bull pedigree* *sire* WHEATLAND BULL 468P *dam* WHEATLAND LADY 443P  
 + A: 7 doses // Qualified: CAN // Stored at Alta Genetics

LOT 93

**CNS DREAM ON L186** // Simmental Semen  
*reg#* BPTG632589-KN // *consigned by* Willow Springs Stock Farms

*bull pedigree* *sire* NICHOLS LEGACY G151 *dam* CNS SHEEZA DREAM K107W  
 + A: 5 doses // Qualified: CAN // Stored at Alta Genetics

LOT 94

**ER BIG SKY 454B** // Simmental Semen  
*reg#* PTG298930-KN // *consigned by* Willow Springs Stock Farms

*bull pedigree* *sire* ER BLACK MACK 568Y *dam* JKE 38W  
 + A: 8 doses // Qualified: CAN // Stored at Alta Genetics

LOT 95

**WHEATLAND RED ACE 747T** // Simmental Semen  
*reg#* PTG678327 // *consigned by* Willow Springs Stock Farms

*bull pedigree* *sire* TNT TOP GUN R244 *dam* WHEATLAND LADY 902J  
 + A: 5 doses // Qualified: CAN // Stored at Alta Genetics

LOT 96

**WHEATLAND RED HUMMER 608S** // Simmental Semen  
*reg#* PG666755 // *consigned by* Willow Springs Stock Farms

*bull pedigree* *sire* WHEATLAND BULL 468P *dam* WHEATLAND LADY 443P  
 + A: 7 doses // Qualified: CAN // Stored at Alta Genetics

LOT 97

**TNT GUNNER N208** // Simmental Semen  
*reg#* PG676236 // *consigned by* Willow Springs Stock Farms

*bull pedigree* *sire* RC STINGER 072K *dam* TNT MISS HONEY L9  
 + A: 8 doses // Qualified: CAN // Stored at Alta Genetics

LOT 98

**LFE RED TANKER 490P** // Simmental Semen  
*reg#* PG624019 // *consigned by* First Class Cattle Marketing

*bull pedigree* *sire* TNT DYNAMITE BLACK L137 *dam* LFE LITTLE RED 137H  
 + A: 10 doses // Qualified: CAN // Stored at Bouchard Livestock  
 + B: 10 doses // Qualified: CAN // Stored at Bouchard Livestock

LOT 99

**REMINGTON ON TARGET 2S** // Simmental Semen  
*reg#* BPTG658801-KN // *consigned by* First Class Cattle Marketing

*bull pedigree* *sire* REMINGTON RED LABEL HR *dam* DRAKE SOFT TOUCH 15M  
 + A: 10 doses // Qualified: CAN // Stored at Bouchard Livestock  
 + B: 10 doses // Qualified: CAN // Stored at Bouchard Livestock





REMINGTON ON TARGET



TNT DYNAMITE BLACK



TH BLACK HOTTIE 23M



TCCO CENTERFOLD 06K



TWIN-CHIEF RED NILE 895N

LOT 100

**REMINGTON ON TARGET 2S** // Simmental Semen  
*reg#* BPTG658801-KN // *consigned by* Arrow Creek Simmentals

bull pedigree

*sire* REMINGTON RED LABEL HR  
 + A: 10 doses // Qualified: CAN

*dam* DRAKE SOFT TOUCH 15M

LOT 101

**TH BLACK HOTTIE 23M** // *reg#* BPG580953  
 Simmental Purebred Embryos // *consigned by* Shologan Stock Farms

donor pedigree

*sire* PTL CUTTING EDGE D209  
 RW BOMBER 8H  
 BABS THE BLACK BOMBER

*dam* NLC GOOD A NUFF 33G  
 BBN MS RED N GOOD 109K  
 BSF MS FIREHOUSE 16H

+ A: 2 Embryos by TNT Dynamite Black L137 // Qualified: CAN // stored at Davis-Rairden

LOT 102

**MRL MISS 726R** // *reg#* PG641992  
 Simmental Purebred Embryos // *consigned by* Shologan Stock Farms

donor pedigree

*sire* NLC 64Y TOMCAT  
 NLC GOOD A NUFF 33G  
 NLC A03 AVALINE

*dam* HOOK'S RED QUORUM 55H  
 MRL MISS 476N  
 MRL MISS 160L

+ A: 4 Embryos by Remington On Target 2S // Qualified: CAN // stored at Davis-Rairden  
 + B: 4 Embryos by Remington On Target 2S // Qualified: CAN // stored at Davis-Rairden

LOT 103

**TCCO CENTERFOLD 06K** // *reg#* BPG543431  
 Simmental Purebred Embryos // *consigned by* Shologan Stock Farms

donor pedigree

*sire* NLC 64Y TOMCAT  
 NLC GOOD A NUFF 33G  
 NLC A03 AVALINE

*dam* HOOK'S RED QUORUM 55H  
 MRL MISS 476N  
 MRL MISS 160L

+ A: 5 Embryos by Remington On Target 2S // Qualified: CAN // stored at Davis-Rairden

LOT 104

**TWIN-CHIEF RED NILE 895N** // *reg#* PG602373  
 Simmental Purebred Embryos // *consigned by* Shologan Stock Farms

donor pedigree

*sire* BS MR ARAPAHOE 811A  
 HF REMINGTON 102E  
 MISS DR A108

*dam* ER RED DASH 649D  
 TWIN-CHIEF HERSHEY 895H  
 TWIN-CHIEF FRIENDLY 595F

+ A: 4 Embryos by Remington On Target 2S // Qualified: CAN // stored at Davis-Rairden





KLONDIKE GOLD RUSH 418B



BEAT



VRL ACAJOU 1C

**LOT 105** **DOUBLE BAR D LINCOLN** // Simmental Fullblood Semen  
*reg# 392284-KN // consigned by Willow Springs Stock Farms*

bull pedigree *sire* PRL PORTERHOUSE REGENT *dam* BAR NONE FENELLA  
 + A: 12 doses // Qualified: CAN // Stored at Alta Genetics

**LOT 106** **JRR RAFFLES P58M** // Simmental Fullblood Semen  
*reg# S653297 // consigned by Willow Springs Stock Farms*

bull pedigree *sire* EISENHERZ *dam* VIRGINIAS MS MATTEL 58M  
 + A: 5 doses // Qualified: CAN // Stored at Alta Genetics

**LOT 107** **BEAT** // Simmental Fullblood Semen  
*reg# 41 // consigned by Willow Springs Stock Farms*

bull pedigree *sire* FELS *dam* KRONI  
 + A: 6 doses // Qualified: CAN // Stored at Alta Genetics

**LOT 108** **VRL ACAJOU 1C** // Simmental Fullblood Semen  
*reg# 446 // consigned by Willow Springs Stock Farms*

bull pedigree *sire* FOX *dam* PEPETTE  
 + A: 2 doses // Qualified: CAN // Stored at Alta Genetics

**LOT 109** **KLONDIKE GOLD RUSH 418B** // Simmental Fullblood Semen  
*reg# T262748-KN // consigned by Arrow Creek Simmentals*

bull pedigree *sire* BEL C&B WESTERN 2ND *dam* SIM-ROC GWEN  
 + A: 4 doses // Qualified: CAN

**LOT 110** **GIDSCO APPOLLO 3F** // Simmental Fullblood Semen  
*reg# T391534-KN // consigned by Arrow Creek Simmentals*

bull pedigree *sire* ANTONIUS *dam* MFL BRENDA 65B  
 + A: 2 doses // Qualified: CAN

**LOT 111** **PHS POLLED WORLDWIDE 14W** // Simmental Fullblood Semen  
*reg# P717966 // consigned by Cornerstone Cattle Co.*

bull pedigree *sire* ROGANT *dam* ROLLING ACRES RED FERN  
 + A: 4 doses // Qualified: CAN // Stored at Bow Valley Genetics

**LOT 112** **BAR 5 GENERAL 406L** // Simmental Fullblood Semen  
*reg# T43603 // consigned by V5 Simmentals*

bull pedigree *sire* CET GALANT BEST 10F *dam* RFG TOSCA 1B  
 + A: 8 doses // Qualified: CAN // Stored at Eastgen  
 + B: 8 doses // Qualified: CAN // Stored at Eastgen  
 All Proceeds go to Friends of Canadian Simmental Foundation

**LOT 113** **BAR 5 MVP 402Y** // Simmental Fullblood Semen  
*reg# T209072 // consigned by V5 Simmentals*

bull pedigree *sire* BRUNDISH PROSPERUS *dam* BAR 5 MS BEST 407L  
 + A: 6 doses // Qualified: CAN // Stored at Eastgen  
 All Proceeds go to Friends of Canadian Simmental Foundation

**LOT 114** **BAR 5 SA HEMISPHERE 411R** // Simmental Fullblood Semen  
*reg# T638038 // consigned by V5 Simmentals*

bull pedigree *sire* BAR 5 SA HERO 823M *dam* BAR 5 SA LADY SISKA 804L  
 + A: 2 doses // Qualified: CAN // Stored at Eastgen  
 All Proceeds go to Friends of Canadian Simmental Foundation





MFL BOSS MAN 5A

**LOT 115 DEK POLLED QUASAR 18U // Simmental Fullblood Semen**  
*reg# PT152364 // consigned by V5 Simmentals*

bull pedigree *sire* **BOLD LEADER** *dam* **MANTAS ADVANTAGE 274M**  
 + A: 2 doses // Qualified: CAN // Stored at Eastgen All Proceeds go to Friends of Canadian Simmental Foundation

**LOT 116 DOUBLE BAR D BUSTER 801L // Simmental Fullblood Semen**  
*reg# T561903-KN // consigned by V5 Simmentals*

bull pedigree *sire* **ELDANDI 907H** *dam* **MRLN BARBL**  
 + A: 3 doses // Qualified: CAN // Stored at Eastgen All Proceeds go to Friends of Canadian Simmental Foundation

**LOT 117 DOUBLE BAR D EVEREST 4R // Simmental Fullblood Semen**  
*reg# P627816 // consigned by V5 Simmentals*

bull pedigree *sire* **EMIL** *dam* **DOUBLE BAR D LYNN 89M**  
 + A: 2 doses // Qualified: CAN // Stored at Eastgen All Proceeds go to Friends of Canadian Simmental Foundation

**LOT 118 EVAR CANADIAN SUMMIT 8P // Simmental Fullblood Semen**  
*reg# G59245 // consigned by V5 Simmentals*

bull pedigree *sire* **EVAR DUPLICATOR 10M** *dam* **MISS AEROLITE 18L**  
 + A: 12 doses // Qualified: CAN // Stored at Eastgen  
 + B: 12 doses // Qualified: CAN // Stored at Eastgen All Proceeds go to Friends of Canadian Simmental Foundation

**LOT 119 CET EXTRA BEST 87K // Simmental Fullblood Semen**  
*reg# 24435 // consigned by V5 Simmentals*

bull pedigree *sire* **WBL EXTRA 1A** *dam* **CET TINDA 1B**  
 + A: 10 doses // Qualified: CAN // Stored at Eastgen All Proceeds go to Friends of Canadian Simmental Foundation  
 + B: 10 doses // Qualified: CAN // Stored at Eastgen  
 + C: 11 doses // Qualified: CAN // Stored at Eastgen  
 + D: 11 doses // Qualified: CAN // Stored at Eastgen

**LOT 120 GALANT // Simmental Fullblood Semen**  
*reg# 11 // consigned by V5 Simmentals*

bull pedigree *sire* **GLADIS** *dam* **SUZETTE**  
 + A: 4 doses // Qualified: CAN // Stored at Eastgen All Proceeds go to Friends of Canadian Simmental Foundation

**LOT 121 L-7 COUNTRY EXPRESS CGR 114N // Simmental Fullblood Semen**  
*reg# 61920 // consigned by V5 Simmentals*

bull pedigree *sire* **L-SEVENS COUNTRY BOY** *dam* **MISS L-SEVEN 664H**  
 + A: 4 doses // Qualified: CAN // Stored at Eastgen All Proceeds go to Friends of Canadian Simmental Foundation

**LOT 122 LONGVIEW NOBLEMAN 4R // Simmental Fullblood Semen**  
*reg# 87469 // consigned by V5 Simmentals*

bull pedigree *sire* **CONRAY NITRO 801N** *dam* **LONGVIEW EXTRA GIRL**  
 + A: 1 doses // Qualified: CAN // Stored at Eastgen All Proceeds go to Friends of Canadian Simmental Foundation

**LOT 123 MAJESTIC // Simmental Fullblood Semen**  
*reg# 3304 // consigned by V5 Simmentals*

bull pedigree *sire* **SEPP** *dam* **JOLANDA**  
 + A: 2 doses // Qualified: CAN // Stored at Eastgen All Proceeds go to Friends of Canadian Simmental Foundation

**LOT 124 MFL BOSS MAN 5A // Simmental Fullblood Semen**  
*reg# T244695-KN // consigned by V5 Simmentals*

bull pedigree *sire* **BOLD** *dam* **MFL PETRA 95P**  
 + A: 3 doses // Qualified: CAN // Stored at Eastgen All Proceeds go to Friends of Canadian Simmental Foundation



LOT 125

**MFL BOSS MAN 5A** // Simmental Fullblood Semen  
*reg# T244695-KN // consigned by Willow Springs Stock Farms*

bull pedigree

sire **BOLD**dam **MFL PETRA 95P**+ **A:** 10 doses // Qualified: CAN

LOT 126

**MFL FOREMAN 36Z** // Simmental Fullblood Semen  
*reg# 223083 // consigned by V5 Simmentals*

bull pedigree

sire **NDM MAJESTAT 20W**dam **KNIGHT'S PEARL 127R**

+ **A:** 10 doses // Qualified: CAN // Stored at Eastgen  
 + **B:** 10 doses // Qualified: CAN // Stored at Eastgen  
 + **C:** 11 doses // Qualified: CAN // Stored at Eastgen  
 + **D:** 11 doses // Qualified: CAN // Stored at Eastgen

All Proceeds go to Friends of Canadian Simmental Foundation

LOT 127

**PARKHILL FIRST DIVIDEND** // Simmental Fullblood Semen  
*reg# T367973-KN // consigned by V5 Simmentals*

bull pedigree

sire **DIVIDEND 87Z**dam **DFM 486D**+ **A:** 5 doses // Qualified: CAN // Stored at Eastgen

All Proceeds go to Friends of Canadian Simmental Foundation

LOT 128

**SIGNAL** // Simmental Fullblood Semen  
*reg# 120 // consigned by V5 Simmentals*

bull pedigree

sire **OPERA**dam **JOLIETTE**+ **A:** 2 doses // Qualified: CAN // Stored at Eastgen

All Proceeds go to Friends of Canadian Simmental Foundation

LOT 129

**TELESTAR** // Simmental Fullblood Semen  
*reg# 11187 // consigned by V5 Simmentals*

bull pedigree

sire **S C SUPERSTAR**dam **SABINE 2A**+ **A:** 5 doses // Qualified: CAN // Stored at Eastgen

All Proceeds go to Friends of Canadian Simmental Foundation

LOT 130

**TLCC FREIGHT TRAIN** // Simmental Fullblood Semen  
*reg# 47273 // consigned by V5 Simmentals*

bull pedigree

sire **GALANT'S HEIR**dam **JARVIS LOUISE**+ **A:** 4 doses // Qualified: CAN // Stored at Eastgen

All Proceeds go to Friends of Canadian Simmental Foundation

LOT 131

**WBL EXTRA 1A** // Simmental Fullblood Semen  
*reg# 357 // consigned by V5 Simmentals*

bull pedigree

sire **CIBO**dam **LILA**+ **A:** 3 doses // Qualified: CAN // Stored at Eastgen

All Proceeds go to Friends of Canadian Simmental Foundation



Timed Auctions Made Easy

*Timed Sale Lots 68-230*  
 on [www.farmgatetimeductions.ca](http://www.farmgatetimeductions.ca)  
 opens Friday, February 12 9:00 AM MST  
 Racehorse close-out  
 Saturday, February 13 6:00 PM MST

CATALOGUE WILL ONLY BE ONLINE AT

[www.firstclasscattlemarketing.com](http://www.firstclasscattlemarketing.com)





HF KODIAK 5R



S A V CAMARO 9272



BROOKING BANK NOTE 4040

LOT 132

**HF KODIAK 5R** // Black Angus Semen  
*reg# 1274305 // consigned by JPM Farms*

bull pedigree *sire* SANDY BAR ADVANTAGE 43M *dam* WILBAR RUBY 955N  
 + A: 2 doses // Qualified: CAN

LOT 136

**S A V CAMARO 9272** // Black Angus Semen  
*reg# 1552424 // consigned by Coalview Livestock*

bull pedigree *sire* S A V FINAL ANSWER 0035 *dam* S A V DUKE GIRL 7348  
 + A: 3 doses // Qualified: CAN // Stored at Millennium Genetics

LOT 133

**GEIS BALOO 13'08** // Black Angus Semen  
*reg# 1455905 // consigned by JPM Farms*

bull pedigree *sire* HF KODIAK 5R *dam* KBJ QUEEN 461L  
 + A: 10 doses // Qualified: CAN  
 + B: 10 doses // Qualified: CAN

LOT 137

**BARDOLENE OF PEAK DOT 204R** // Black Angus Semen  
*reg# 583665 // consigned by Fleury Cattle Co.*

bull pedigree *sire* BARDOLENE OF PEAK DOT 134N *dam* QUILL PLAINS PRIDE 26L  
 + A: 10 doses // Qualified: CAN // Stored at Alta Genetics  
 + B: 10 doses // Qualified: CAN // Stored at Alta Genetics

LOT 134

**DBRL 03M TITAN 4T** // Black Angus Semen  
*reg# 1392285 // consigned by JPM Farms*

bull pedigree *sire* DMM AMBUSH 03M *dam* DBRL BLACKBIRD 2N  
 + A: 12 doses // Qualified: CAN  
 + B: 12 doses // Qualified: CAN  
 + C: 12 doses // Qualified: CAN

LOT 138

**BENFIELD REALITY 6211** // Black Angus Semen  
*reg# 1774477 // consigned by Coalview Livestock*

bull pedigree *sire* S CHISUM 6175 *dam* BENFIELD EDELLA 1105  
 + A: 5 doses // Qualified: CAN // Stored at Millennium Genetics

LOT 135

**REMINGTON'S TURBO POWER 73C** // Black Angus Semen  
*reg# 777723 // consigned by Southern Angys*

bull pedigree *sire* MVF TURBO POWER 24W *dam* HOSMER LADY SKY 302P  
 + A: 10 doses // Qualified: CAN  
 + B: 10 doses // Qualified: CAN

LOT 139

**JOHNSTON BANDOLIER 170F** // Black Angus Semen  
*reg# 865056 // consigned by Fleury Cattle Co.*

bull pedigree *sire* BROOKSIDE BANDOLIER 12U *dam* JOHNSTON MAX TRADITION 370A  
 + A: 10 doses // Qualified: USA and CAN // Stored at Emtech  
 + B: 10 doses // Qualified: USA and CAN // Stored at Emtech





CONNEALY COMBINATION 0188



BON VIEW NEW DESIGN 878



WOODHILL FORESIGHT

LOT 140

**CONNEALY COMBINATION 0188** // Black Angus Semen  
*reg#* American #16748950 // *consigned by* Coalview Livestock

*bull pedigree* *sire* CONNEALY CONSENSUS *dam* BLACK CAYRA OF CONANGA 8127  
 + A: 9 doses // Qualified: CAN // Stored at Millennium Genetics

LOT 141

**SOUTHERN KRUGGERAND 16H** // Black Angus Semen  
*reg#* 948350 // *consigned by* Southern Angus

*bull pedigree* *sire* KRUGERRAND OF DONAMERE 490 *dam* SOUTHERN TALL PRIDE 72W  
 + A: 10 doses // Qualified: CAN  
 + B: 10 doses // Qualified: CAN  
 + C: 10 doses // Qualified: CAN

LOT 142

**BON VIEW NEW DESIGN 878** // Black Angus Semen  
*reg#* 981361 // *consigned by* Severtson Land & Cattle

*bull pedigree* *sire* B/R NEW DESIGN 036 *dam* BON VIEW GAMMER 85  
 + A: 10 doses // Qualified: CAN

LOT 143

**WOODHILL FORESIGHT** // Black Angus Semen  
*reg#* 1191517 // *consigned by* Severtson Land & Cattle

*bull pedigree* *sire* PAPA FORTE 1921 *dam* BON VIEW GAMMER 85  
 + A: 3 doses // Qualified: CAN

LOT 144

**WAR HALL OF FAME 8023** // Black Angus Semen  
*reg#* 1036952 // *consigned by* Severtson Land & Cattle

*bull pedigree* *sire* S A F FAME *dam* WAR BANDO 6143 598 7005  
 + A: 10 doses // Qualified: CAN

LOT 145

**PINE DRIVE BIG SKY** // Black Angus Semen  
*reg#* 572983 // *consigned by* Hlusek Farms

*bull pedigree* *sire* LE MAR EILEENMERE LAD 549 *dam* BENLOCK BLACKCAP 108K  
 + A: 2 doses // Qualified: CAN

LOT 146

**BROOKING BANK NOTE 4040** // Black Angus Semen  
*reg#* 1776488 // *consigned by* Willow Springs Stock Farms

*bull pedigree* *sire* CONNEALY EARNAN 076E *dam* E A ROSE 918  
 + A: 5 doses // Qualified: CAN // Stored at Alta Genetics

LOT 147

**O C C UNMISTAKABLE 946U** // Black Angus Semen  
*reg#* 1769203 // *consigned by* Willow Springs Stock Farms

*bull pedigree* *sire* O C C PAXTON 730P *dam* FCC REVOLUTION ROSE 2476  
 + A: 10 doses // Qualified: CAN // Stored at Alta Genetics

LOT 148

**PINEBANK WAIGROUP 41/97** // Black Angus Semen  
*reg#* 1304235 // *consigned by* Willow Springs Stock Farms

*bull pedigree* *sire* PINEBANK WAIG 31/95 *dam* PINEBANK 639/88  
 + A: 10 doses // Qualified: CAN // Stored at Alta Genetics

LOT 149

**D D A FAHREN 21X** // Black Angus Semen  
*reg#* 1262206 // *consigned by* Willow Springs Stock Farms

*bull pedigree* *sire* FAHREN OF WYE UMF 5830 *dam* D D A MELISA 549  
 + A: 10 doses // Qualified: CAN // Stored at Alta Genetics





5T POWER CHIP 4790



KBJ CONQOUR ALL 447J



CONNELY THUNDER

LOT 150

**SOUTHOLM ACCUTRON** // Black Angus Semen  
 reg# 657168 // consigned by Willow Springs Stock Farms

bull pedigree sire WILDWOODS BRAE EXPRESS SK03 dam BARBARA OF ALJON 40P  
 + A: 6 doses // Qualified: CAN // Stored at Alta Genetics

LOT 152

**KBJ CONQOUR ALL 447J** // Black Angus Semen  
 reg# 965913 // consigned by Willow Springs Stock Farms

bull pedigree sire CRESCENT CREEK MAXIMUM 37C dam LLB KINCHTRY BEAUTY 403E  
 + A: 2 doses // Qualified: CAN // Stored at Alta Genetics

LOT 151

**STEVENSON FORTUNE 425C** // Black Angus Semen  
 reg# 812011 // consigned by Willow Springs Stock Farms

bull pedigree sire GARDENS FORTUNE 9213 S3 dam J R S ENCHANTRESS 235Z  
 + A: 6 doses // Qualified: CAN // Stored at Alta Genetics

LOT 153

**CONNELY THUNDER** // Black Angus Semen  
 reg# 1385922 // consigned by Cinderlyn Farms

bull pedigree sire BALDRIDGE KABOOM K243 KCF dam PARKA OF CONANGA 241  
 + A: 1 doses // Qualified: CAN // Stored at Millennium Genetics

LOT 154

**5T POWER CHIP 4790** // Black Angus Semen  
 reg# 1959039 // consigned by First Class Cattle Marketing

bull pedigree sire EXAR BLUE CHIP 1877B dam 5T MISS WIX 8002  
 + A: 5 doses // Qualified: CAN // Stored at Bouchard Livestock

LIMOUSIN SEMEN



WULFS QUARTERBACK 4222B

LOT 155

**JCL BLACK FIRE** // Limousin Semen  
 reg# NPM433279 // consigned by Cinderlyn Farms

bull pedigree sire WULFS QUARTERBACK 4222B dam JCL SANDRA  
 + A: 2 doses // Qualified: CAN // Stored at Millennium Genetics



Lot 156&157

**RED GOLDEN DAWN KURUBA 29L**

Red Angus Embryos // reg# 1135641 // consigned by First Class Cattle Marketing and Glengary Ranch



donor pedigree

RED PINE MEADOW 14P  
sire **RED SSS ZAMA PINE 37S**  
RED SSS DYAMA 503M

RED KBJ SAM'S PROSPECTOR 133Z  
dam **RED GEIS KURUBA 5'92**  
THREE D KURUBA 36'86

- + 156A: 3 Embryos by Red Brylor SDL Pasquale 213P // Qualified: USA and CAN // Stored at DRI
- + 156B: 3 Embryos by Red Brylor SDL Pasquale 213P // Qualified: USA and CAN // Stored at DRI
- + 157: 3 Embryos by Red Brylor SDL Pasquale 213P // Qualified: CAN // Stored at Bova Tech



sire A: Red Brylor SDL Pasquale 213P

Lot 158

**RED COMPASS MS DIVIDEND 815J**

Red Angus Embryos // reg# 1029535 // consigned by Glengary Ranch



donor pedigree

RED GLACIER DIVIDE 310  
sire **RED RD DIVIDEND 7F**  
RED DCC COPPER LASS 31

RED BRYLOR DYNASTAR 19S  
dam **RED BRYLOR CHEROK 40X**  
BLACK BRYLOR EILEEN 62S

- + A: 2 Embryos by Red Ubar Sequoia 202 // Qualified: CAN // Stored at Bova Tech
- + B: 1 Embryos by Red Perks Chateua 309R // Qualified: CAN // Stored at Bova Tech
- + C: 3 Embryos by Red Buff Creek Chief 092-824 // Qualified: CAN // Stored at Bova Tech
- + D: 1 Embryos by Red Compass Mulberry 449M // Qualified: CAN // Stored at Bova Tech





RED YY 408D TOP GUN 614F

**LOT 159** **RED YY 408D TOP GUN 614F** // Red Angus Semen  
*reg# 845578 // consigned by Severtson Land & Cattle*

bull pedigree *sire* RED YY 23L TOPPER 408D *dam* RED DEVOLANE GOLDIE 40C  
 + A: 10 doses // Qualified: CAN



RED LCHMN GRND CANYON 1244G

**LOT 164** **RED LMAN KING ROB 8621** // Red Angus Semen  
*reg# 844083 // consigned by Severtson Land & Cattle*

bull pedigree *sire* RED LEACHMAN ROBUST 7222 *dam* RED LEACHMAN ELEANOR  
 + A: 7 doses // Qualified: CAN



RED LMAN KING ROB 8621

**LOT 160** **RED LMAN NONE BETTER 9604** // Red Angus Semen  
*reg# 756405 // consigned by Severtson Land & Cattle*

bull pedigree *sire* RED LEACHMAN BETTER HVY 8041 *dam* RED LEACHMAN ELEANOR  
 + A: 5 doses // Qualified: CAN

**LOT 165** **RED LEACHMAN RED TOP 8658** // Red Angus Semen  
*reg# 763476 // consigned by Severtson Land & Cattle*

bull pedigree *sire* COPPER TOP CHIEF 301 *dam* LEACHMAN MARGE 7045  
 + A: 10 doses // Qualified: CAN

**LOT 161** **RED LMAN LADIES MAN 1144B** // Red Angus Semen  
*reg# 792583 // consigned by Severtson Land & Cattle*

bull pedigree *sire* RED LEACHMAN RED TOP 8658 *dam* LEACHMAN RD RSE 7016  
 + A: 9 doses // Qualified: CAN

**LOT 166** **RED LCHMN GRND CANYON 1244G** // Red Angus Semen  
*reg# 948971 // consigned by Severtson Land & Cattle*

bull pedigree *sire* RED BUF CRK CHF 824-1658 *dam* RED KRN REBA'S ROBIN  
 + A: 9 doses // Qualified: CAN

**LOT 162** **RED LMAN KINGDOM COME 1005B** // Red Angus Semen  
*reg# 816044 // consigned by Severtson Land & Cattle*

bull pedigree *sire* RED LEACHMAN KINGDOM 8251 *dam* LEACHMAN LARKABA 298913  
 + A: 6 doses // Qualified: CAN

**LOT 167** **RED GOLD-BAR KING V415 107K** // Red Angus Semen  
*reg# 106963 // consigned by Severtson Land & Cattle*

bull pedigree *sire* RED BLAZE V415 *dam* RED KENRAY MISS DAWN 114F  
 + A: 10 doses // Qualified: CAN

**LOT 163** **RED LEACHMAN PRF-R012** // Red Angus Semen  
*reg# 639619 // consigned by Severtson Land & Cattle*

bull pedigree *sire* PRF CHIEFLINE K589 *dam* PRF DINA M283  
 + A: 7 doses // Qualified: CAN

**LOT 168** **RED MEADOW CK HANFORD TCB 17C** // Red Angus Semen  
*reg# 772996 // consigned by Severtson Land & Cattle*

bull pedigree *sire* RED HANFORD TCB *dam* RED MEADOW CK COPPER MISS 30Z  
 + A: 3 doses // Qualified: CAN





RED LAZY MC TRADITION 111C



RED DKF RAZOR 55C



RED NCJ LAZYMC RAMBLIN MAN

**LOT 169** **RED TOWAW BOLD FUTURE 310D** // Red Angus Semen  
*reg# 805779 // consigned by Severtson Land & Cattle*

bull pedigree *sire* ACUMEN BOLD LEADER 30X *dam* RED TOWAW DOLL 67P  
 + A: 7 doses // Qualified: CAN

**LOT 174** **RED LAZY MC COWBOY CUT 26U** // Red Angus Semen  
*reg# 1441140 // consigned by First Class Cattle Marketing*

bull pedigree *sire* RED LAZY MC STOUT 30S *dam* RED LAZY MC STAR 185M  
 + A: 10 doses // Qualified: CAN // stored at Bouchard Livestock

**LOT 170** **RED LAZY MC TRADITION 111C** // Red Angus Semen  
*reg# 1859022 // consigned by First Class Cattle Marketing*

bull pedigree *sire* RED WPRA LEGACY A-314 *dam* RED LAZY MC FIREFLY 78R  
 + A: 5 doses // Qualified: CAN // stored at Bouchard Livestock

**LOT 175** **RED LAZY MC FORUM 223Y** // Red Angus Semen  
*reg# 1658228 // consigned by First Class Cattle Marketing*

bull pedigree *sire* RED RMJ REDMAN 1T *dam* RED LAZY MC BESS 12S  
 + A: 10 doses // Qualified: CAN // stored at Bouchard Livestock

**LOT 171** **RED DKF RAZOR 55C** // Red Angus Semen  
*reg# 1877389 // consigned by First Class Cattle Marketing*

bull pedigree *sire* DKF ELIMINATOR 15A *dam* DKF MISS NET WORTH 21A  
 + A: 1 doses // Qualified: CAN // stored at Bouchard Livestock

**LOT 176** **RED LAZY MC TROOPER 21Y** // Red Angus Semen  
*reg# 1639504 // consigned by First Class Cattle Marketing*

bull pedigree *sire* RED SSS SOLDIER 365W *dam* LAZY MC EXPRESS 60W  
 + A: 5 doses // Qualified: CAN // stored at Bouchard Livestock

**LOT 172** **RED TER-RON MAMBO 28K** // Red Angus Semen  
*reg# 1013334 // consigned by First Class Cattle Marketing*

bull pedigree *sire* RED YY RED KNIGHT 640F *dam* RED ALDER ABG STAR DUST 8G  
 + A: 4 doses // Qualified: CAN // stored at Bouchard Livestock

**LOT 177** **WPRA LEGACY A314** // Red Angus Semen  
*reg# 1777454 // consigned by First Class Cattle Marketing*

bull pedigree *sire* RED LAZY MC EYE SPY 64Y *dam* RED WPRA EVERLEDA ENTENSE 61O  
 + A: 10 doses // Qualified: CAN // stored at Bouchard Livestock

**LOT 173** **RED NCJ LAZYMC RAMBLINMAN 305B** // Red Angus Semen  
*reg# 1829554 // consigned by First Class Cattle Marketing*

bull pedigree *sire* RED LAZY MC TROOPER 21Y *dam* RED HXC JOLENE 301N  
 + A: 5 doses // Qualified: CAN // stored at Bouchard Livestock



FULLBLOOD WAGYU SEMEN



BAR R JIRO 22T

LOT 178

**BAR R JIRO 22T** // Fullblood Wagyu Semen

reg# **FB7879** // consigned by **Coalview Livestock**

bull pedigree

sire **JVP FUKUTSURU 068**

dam **BAR R MISS 2N**

+ **A**: 10 doses // Qualified: CAN // Stored at Millennium Genetics

CHAROLAIS SEMEN



CEDARLEA EL PASO 19F

LOT 179

**CEDARLEA EL PASO 19F** // Charolais Semen

reg# **PMC744051** // consigned by **Craig Charolais**

bull pedigree

sire **CIRCLE CEE LEGEND 307A**

dam **CEDARLEA WANITA 19B**

+ **A**: 10 doses // Qualified: USA and CAN // Stored at Bow Valley

+ **B**: 10 doses // Qualified: USA and CAN // Stored at Bow Valley

+ **C**: 10 doses // Qualified: USA and CAN // Stored at Bow Valley

+ **D**: 10 doses // Qualified: USA and CAN // Stored at Bow Valley

+ **E**: 10 doses // Qualified: USA and CAN // Stored at Bow Valley

+ **F**: 10 doses // Qualified: USA and CAN // Stored at Bow Valley

+ **G**: 10 doses // Qualified: USA and CAN // Stored at Bow Valley

+ **H**: 10 doses // Qualified: USA and CAN // Stored at Bow Valley

+ **I**: 10 doses // Qualified: USA and CAN // Stored at Bow Valley

+ **J**: 10 doses // Qualified: USA and CAN // Stored at Bow Valley

CLUB CALF SEMEN



MATERNAL PERFECTION



BLEEDIN PURPLE



I BELIEVE





NUN BETTER



PRETTY SNAZZY



ONE AND ONLY



POINT TAKEN

LOT 180

**HRF HAIRY** // Club Calf Semen  
consigned by **Horner Cattle Co.**

bull pedigree sire **HAIRY BEAR** dam **WAG HAIRETTA (WHO MADE WHO)**  
+ A: 2 doses // Qualified: CAN

LOT 181

**CONTAGIOUS** // Club Calf Semen  
consigned by **Horner Cattle Co.**

bull pedigree sire **MONOPOLY** dam **SIMM/ANGUS**  
+ A: 10 doses // Qualified: CAN  
+ B: 10 doses // Qualified: CAN  
+ C: 10 doses // Qualified: CAN  
+ D: 10 doses // Qualified: CAN

LOT 182

**I-67** // Club Calf Semen  
consigned by **Horner Cattle Co.**

bull pedigree sire **I-80** dam **MOMENTUM**  
+ A: 5 doses // Qualified: CAN

LOT 183

**MATERNAL PERFECTION** // Club Calf Semen  
consigned by **Horner Cattle Co.**

bull pedigree sire **IRISH WHISKEY** dam **IMPRINT/WHITCH DR/CHILL FACTOR**  
+ A: 5 doses // Qualified: CAN

LOT 184

**I BELIEVE** // Club Calf Semen  
consigned by **Horner Cattle Co.**

bull pedigree sire **BELIEVE IN ME** dam **BPF MILEY 80T (HARD CORE/DOCTOR WHO)**  
+ A: 10 doses // Qualified: CAN

LOT 185

**ONE AND ONLY** // Club Calf Semen  
consigned by **Horner Cattle Co.**

bull pedigree sire **HEAT WAVE** dam **WADES 109 (FULL ATTACK/THROTTLE)**  
+ A: 8 doses // Qualified: CAN // Stored at Eastgen

LOT 186

**NUN BETTER** // Club Calf Semen  
consigned by **Hlusek Farms**

bull pedigree sire **MAN AMONG BOYS** dam **MKADABRA**  
+ A: 5 doses // Qualified: CAN // Stored at Westgen

LOT 187

**PRETTY SNAZZY** // Club Calf Semen  
consigned by **Hlusek Farms**

bull pedigree sire **CARPE DIEM** dam **NORTHERN GUN FEMALE**  
+ A: 5 doses // Qualified: CAN // Stored at Westgen

LOT 188

**BLEEDIN PURPLE** // Club Calf Semen  
consigned by **Willow Springs Stock Farms**

bull pedigree sire **BLEEDING PURPLE (HEAT WAVE)** dam **WHO MADE WHO/HOSTAGE**  
+ A: 4 doses // Qualified: CAN // Stored at Alta Genetics

LOT 189

**HOLLYWOOD** // Club Calf Semen  
consigned by **Willow Springs Stock Farms**

bull pedigree sire **HEAT WAVE** dam **DRAFT PICK ANGUS**  
+ A: 9 doses // Qualified: CAN // Stored at Alta Genetics

LOT 190

**POINT TAKEN** // Club Calf Semen  
consigned by **Willow Springs Stock Farms**

bull pedigree sire **HEAT SEEKER** dam **WHIPLASH**  
+ A: 10 doses // Qualified: CAN // Stored at Alta Genetics





CUNIA

LOT 191

**CUNIA // Maine Anjou Semen**  
*reg# 14 // consigned by First Class Cattle Marketing*

bull pedigree *sire* **ATAN** *dam* **PETUNIA**  
 + **A:** 4 doses // Qualified: CAN // Stored at Bouchard Livestock  
 + **B:** 4 doses // Qualified: CAN // Stored at Bouchard Livestock

LOT 192

**O D W GOLDSTREAM 5T // Maine Anjou Semen**  
*reg# X-500777 // consigned by First Class Cattle Marketing*

bull pedigree *sire* **TWIN CREEK ETULASON** *dam* **HILLVIEW GOLDETTTE 9642**  
 + **A:** 7 doses // Qualified: CAN // Stored at Bouchard Livestock  
 + **B:** 7 doses // Qualified: CAN // Stored at Bouchard Livestock

LOT 193

**WLW CAHUNA 50A // Maine Anjou Semen**  
*reg# 30500 // consigned by First Class Cattle Marketing*

bull pedigree *sire* **ZTA BLACK MAGNUM 220X** *dam* **VISTA'S CLASSIC 5T**  
 + **A:** 4 doses // Qualified: CAN // Stored at Bouchard Livestock  
 + **B:** 4 doses // Qualified: CAN // Stored at Bouchard Livestock  
 + **C:** 4 doses // Qualified: CAN // Stored at Bouchard Livestock

LOT 194

**POPLAR HAVEN 'SMITHBILT 73S' // Maine Anjou Semen**  
*reg# 14934 // consigned by First Class Cattle Marketing*

bull pedigree *sire* **VHF PROSPCT 'BLACK ATTACK'023P** *dam* **ELAZYE MISS 73L**  
 + **A:** 10 doses // Qualified: CAN // Stored at Bouchard Livestock  
 + **B:** 10 doses // Qualified: CAN // Stored at Bouchard Livestock  
 + **C:** 8 doses // Qualified: CAN // Stored at Bouchard Livestock

LOT 195

**POPLAR HAVEN RED ALERT 54T // Maine Anjou Semen**  
*reg# 17186 // consigned by First Class Cattle Marketing*

bull pedigree *sire* **GRANDVIEW REVOLUTION 25R** *dam* **KFN NOKO DABLINA 10P**  
 + **A:** 10 doses // Qualified: CAN // Stored at Bouchard Livestock

LOT 196

**ZTA BLACK OAK 625A // Maine Anjou Semen**  
*reg# 29831 // consigned by First Class Cattle Marketing*

bull pedigree *sire* **DF MIDAS 5N** *dam* **ZTA POLLY 766S**  
 + **A:** 10 doses // Qualified: CAN // Stored at Bouchard Livestock  
 + **B:** 10 doses // Qualified: CAN // Stored at Bouchard Livestock  
 + **C:** 10 doses // Qualified: CAN // Stored at Bouchard Livestock

LOT 197

**MSD 50W // Maine Anjou Semen**  
*reg# 20864 // consigned by First Class Cattle Marketing*

bull pedigree *sire* **POPLAR HAVEN 68T 'BLACKSMITH'** *dam* **MSD DAINES 1T**  
 + **A:** 10 doses // Qualified: CAN // Stored at Bouchard Livestock  
 + **B:** 10 doses // Qualified: CAN // Stored at Bouchard Livestock  
 + **C:** 10 doses // Qualified: CAN // Stored at Bouchard Livestock

LOT 198

**BNH PATTERN PLUS 14Z // Maine Anjou Semen**  
*reg# 29587 // consigned by First Class Cattle Marketing*

bull pedigree *sire* **BNH BUCCANEER 8W** *dam* **LGH MISS HANS 23R**  
 + **A:** 10 doses // Qualified: CAN // Stored at Bouchard Livestock  
 + **B:** 10 doses // Qualified: CAN // Stored at Bouchard Livestock  
 + **C:** 5 doses // Qualified: CAN // Stored at Bouchard Livestock



SPECKLE PARK SEMEN



YOGI GOES REDNECK

LOT 199

**JSF YOGI GOES REDNECK** // Speckle Park Semen

reg# [CAN]3494-PB 100% // consigned by Hlusek Farms

bull pedigree

sire REDNECK WILD WILLY 2W

dam ASPEN ACRES LINDA LOU 10L

+ A: 8 doses // Qualified: CAN // Stored at Westgen

SHORTHORN SEMEN



SASKVALLEY YESTERDAY

LOT 200

**SASKVALLEY YESTERDAY** // Shorthorn Semen

reg# X-[CAN]M476051 100% // consigned by First Class Cattle Marketing

bull pedigree

sire SASKVALLEY WHOLESALE 114W

dam SASKVALLEY ROSE 43W

+ A: 5 doses // Qualified: CAN



G S IRISH SWEEPSTAKES

LOT 202

**HOMEDALE EQUITY** // Shorthorn Semen

reg# X-M465685 // consigned by Willow Spings Stock Farms

bull pedigree

sire WK EQUITY

dam HOMEDALE RUBY D4

+ A: 5 doses // Qualified: CAN // Stored at Alta Genetics



DEERPARK IMPROVER

LOT 201

**G S IRISH SWEEPSTAKES** // Shorthorn Semen

reg# M456767 100% // consigned by Willow Spings Stock Farms

bull pedigree

sire DEERPARK LEADER 13TH

dam MATCHLESS CLIPPER MAID 77

+ A: 5 doses // Qualified: CAN // Stored at Alta Genetics

LOT 203

**SEVEN T'S GREG** // Shorthorn Semen

reg# M458414 100% // consigned by Willow Springs Stock Farms

bull pedigree

sire WO DIVIDEND 3J

dam CLAYSIDE VALENTINA

+ A: 10 doses // Qualified: CAN // Stored at Alta Genetics





DF PURE GOLD 3N



EIONMOR ROYAL PIPER 22T



CRESTDALE SUPER FLAG 14G

**LOT 204** **MANDALONG SUPER FLAG** // Shorthorn Semen  
 reg# X-M437910 100% // consigned by Willow Springs Stock Farms  
 bull pedigree sire ALICE DOWNS SUPREME 27TH dam MANDALONG ROANY 20  
 + A: 6 doses // Qualified: CAN // Stored at Alta Genetics

**LOT 209** **DIAMOND LEGS 21** // Shorthorn Semen  
 reg# X-M465721 100% // consigned by Willow Springs Stock Farms  
 bull pedigree sire WO DIVIDEND 3J dam K BAR K DIAMOND  
 + A: 10 doses // Qualified: CAN // Stored at Alta Genetics

**LOT 205** **CLARK** // Shorthorn Semen  
 reg# X-M481138 100% // consigned by Willow Springs Stock Farms  
 bull pedigree sire SCOTTSHILL MAJOR CLARK dam MARCIA VENUS  
 + A: 4 doses // Qualified: CAN // Stored at Alta Genetics

**LOT 210** **BUTTERFIELD ABLE SEAMAN** // Shorthorn Semen  
 reg# X-M461819 100% // consigned by Willow Springs Stock Farms  
 bull pedigree sire BUTTERFIELD F L'S TEXAS dam BALGERRAN IRIS 95Y  
 + A: 4 doses // Qualified: CAN // Stored at Alta Genetics

**LOT 206** **DF PURE GOLD 3N** // Shorthorn Semen  
 reg# X-[CAN]12060 100% // consigned by Willow Springs Stock Farms  
 bull pedigree sire BYLAND GOLD SPEAR dam DF STARLET 1K  
 + A: 5 doses // Qualified: CAN // Stored at Alta Genetics

**LOT 211** **BYLAND GOLD SPEAR** // Shorthorn Semen  
 reg# X-[CAN]M468851 100% // consigned by Willow Springs Stock Farms  
 bull pedigree sire BYLAND GOLD DUST dam BYLAND AUGUSTA 1D40  
 + A: 3 doses // Qualified: CAN // Stored at Alta Genetics

**LOT 207** **DEERPARK IMPROVER** // Shorthorn Semen  
 reg# M454358 100% // consigned by Willow Springs Stock Farms  
 bull pedigree sire CLARE MAN dam DEERPARK GRADY  
 + A: 4 doses // Qualified: CAN // Stored at Alta Genetics  
 + B: 4 doses // Qualified: CAN // Stored at Alta Genetics

**LOT 212** **CRESTDALE SUPER FLAG 14G** // Shorthorn Semen  
 reg# X-M445725 100% // consigned by Willow Springs Stock Farms  
 bull pedigree sire MANDALONG SUPER FLAG dam CRESTDALE MAUD VERA 4B  
 + A: 4 doses // Qualified: CAN // Stored at Alta Genetics  
 + B: 3 doses // Qualified: CAN // Stored at Alta Genetics

**LOT 208** **HOPE IMPROVER 37X** // Shorthorn Semen  
 reg# M461965 100% // consigned by Willow Springs Stock Farms  
 bull pedigree sire KENBAR IRISH IMPROVER dam KENBAR MONA LISA  
 + A: 10 doses // Qualified: CAN // Stored at Alta Genetics

**LOT 213** **NODAK KING'S TRADITION** // Shorthorn Semen  
 reg# [USA]348533 // consigned by Willow Springs Stock Farms  
 bull pedigree sire KING ROAN BEAUTY dam NODAK COUNTESS TRUDY  
 + A: 4 doses // Qualified: CAN // Stored at Alta Genetics





HHFS DREAM WEAVER



EIONMOR MASTERPIECE 36K



EIONMOR IDEAL 69F

**LOT 214** **MILL BROOK MARK 1V** // Shorthorn Semen  
*reg# X-M456359 100% // consigned by Willow Springs Stock Farms*

bull pedigree *sire* MILL BROOK RANSOM G NINE 2975 *dam* MILL BROOK NITA 73  
 + A: 4 doses // Qualified: CAN // Stored at Alta Genetics

**LOT 215** **HWS BUBBA** // Shorthorn Semen  
*reg# X-\*1925 98.5% // consigned by Willow Springs Stock Farms*

bull pedigree *sire* EVERGREEN SEVILLE *dam* GRHS RED ROSEY  
 + A: 8 doses // Qualified: CAN // Stored at Alta Genetics

**LOT 216** **ESQUIRE PLAYER** // Shorthorn Semen  
*reg# X-\*1573 93.8% // consigned by Willow Springs Stock Farms*

bull pedigree *sire* GR OLD HICKORY *dam* GR ABBY LIL  
 + A: 3 doses // Qualified: CAN // Stored at Alta Genetics

**LOT 217** **MOOMBI POWERPLAY J89** // Shorthorn Semen  
*reg# X-M462346 100% // consigned by Willow Springs Stock Farms*

bull pedigree *sire* WYARAMA PEPPER *dam* MANDALONG ENIA 6TH  
 + A: 1 doses // Qualified: CAN // Stored at Alta Genetics

**LOT 218** **STRATHOR HALFTIME 1A** // Shorthorn Semen  
*reg# \*1674 100% // consigned by Willow Springs Stock Farms*

bull pedigree *sire* AF 12 O'CLOCK HIGH *dam* STRATHORE SARAH BEAUTY 7X  
 + A: 2 doses // Qualified: CAN // Stored at Alta Genetics

**LOT 219** **HHFS DREAM WEAVER** // Shorthorn Semen  
*reg# X-[CAN]M467673 100% // consigned by Willow Springs Stock Farms*

bull pedigree *sire* MARELLAN SUPER DAZZLER 1ST *dam* TS JEANIE MARIE BC  
 + A: 10 doses // Qualified: CAN // Stored at Alta Genetics

**LOT 220** **CCS MARC DRIVE** // Shorthorn Semen  
*reg# X-\*2810 98.5% // consigned by Willow Springs Stock Farms*

bull pedigree *sire* MILL BROOK MARC IV *dam* WC ROSEANN 8916  
 + A: 2 doses // Qualified: CAN // Stored at Alta Genetics

**LOT 221** **EIONMOR ROYAL PIPER 22T** // Shorthorn Semen  
*reg# X-[CAN]M473248 100% // consigned by Willow Springs Stock Farms*

bull pedigree *sire* DOWNSVIEW PROPHET 10M *dam* EIONMOR ULTRA RUBY 99L  
 + A: 10 doses // Qualified: CAN // Stored at Alta Genetics

**LOT 222** **EIONMOR MASTERPIECE 36K** // Shorthorn Semen  
*reg# X-[CAN]M468600 100% // consigned by Willow Springs Stock Farms*

bull pedigree *sire* EIONMOR MASTERPIECE 41E *dam* EIONMOR MOCHICAN RUBY 45F  
 + A: 10 doses // Qualified: CAN // Stored at Alta Genetics

**LOT 223** **EIONMOR IDEAL 69F** // Shorthorn Semen  
*reg# X-M466444 100% // consigned by Willow Springs Stock Farms*

bull pedigree *sire* LANALTA WHITEOUT 1C *dam* EIONMOR MOCHICAN HAZEL 42B  
 + A: 5 doses // Qualified: CAN // Stored at Alta Genetics  
 + B: 5 doses // Qualified: CAN // Stored at Alta Genetics



**LOT 224** **EIONMOR CHIEFTAN 63R** // Shorthorn Semen  
 reg# X-M471704 100% // consigned by Willow Springs Stock Farms

bull pedigree sire **EIONMOR CHIEF 16H** dam **DOWNSVIEW MATCHLESS 2L**  
 + A: 10 doses // Qualified: CAN // Stored at Alta Genetics

**LOT 225** **EIONMOR MR GUS 80C** // Shorthorn Semen  
 reg# X-M464139 100% // consigned by Willow Springs Stock Farms

bull pedigree sire **Gafa MOCHICAN** dam **EIONMOR CAMELOT RUBY 94T**  
 + A: 5 doses // Qualified: CAN // Stored at Alta Genetics

**LOT 226** **EIONMOR ULTRA 8C** // Shorthorn Semen  
 reg# X-M464141 100% // consigned by Willow Springs Stock Farms

bull pedigree sire **BUTTERFIELD ULTRAMARINE** dam **EIONMOR MOCHICAN BEAUTY 103Z**  
 + A: 10 doses // Qualified: CAN // Stored at Alta Genetics



EIONMOR ULTRA 8C



MEL-BAR KNOCKOUT 269

**LOT 227** **MEL-BAR KNOCKOUT 269** // Shorthorn Semen  
 reg# X-\*3006 98.5% // consigned by Willow Springs Stock Farms

bull pedigree sire **BF KNOCK-OUT X** dam **MEL-BAR PRINCESS MAG 730**  
 + A: 10 doses // Qualified: CAN // Stored at Alta Genetics

**LOT 228** **STRATHORE MYSTIC MARVEL 10A** // Shorthorn Semen  
 reg# X-[CAN]M473248 96.9% // consigned by Willow Springs Stock Farms

bull pedigree sire **AF 12 O'CLOCK HIGH** dam **STRATHORE MYSTIC ROSEWOOD**  
 + A: 8 doses // Qualified: CAN // Stored at Alta Genetics

**LOT 229** **10 UNIT LOT** // Shorthorn Semen  
 consigned by Millbrook Farms

**Bid buys the entire lot**

- + 2 STRAWS AF SL FINISH LINE
- + 2 STRAWS DF TALLADEGA
- + 1 STRAW CF V8 VERSATILE
- + 2 STRAWS B GOOD SOLDIER
- + 3 STRAWS SBF POWER PLAY

**LOT 230** **SBF PLATINUM 1Z** // FEMALE SEXED Shorthorn Semen  
 reg# X-[CAN]\*19766 98.4% // consigned by Millbrook Farms

bull pedigree sire **DF PURE GOLD 3N** dam **SBF PERFECT RODEO 14X ET**  
 + A: 3 doses // Qualified: CAN



DF TALLADEGA



reference sire

EIONMOR ROYAL PIPER 22T

SEMEN SELLS



CF V8 VERSATILE



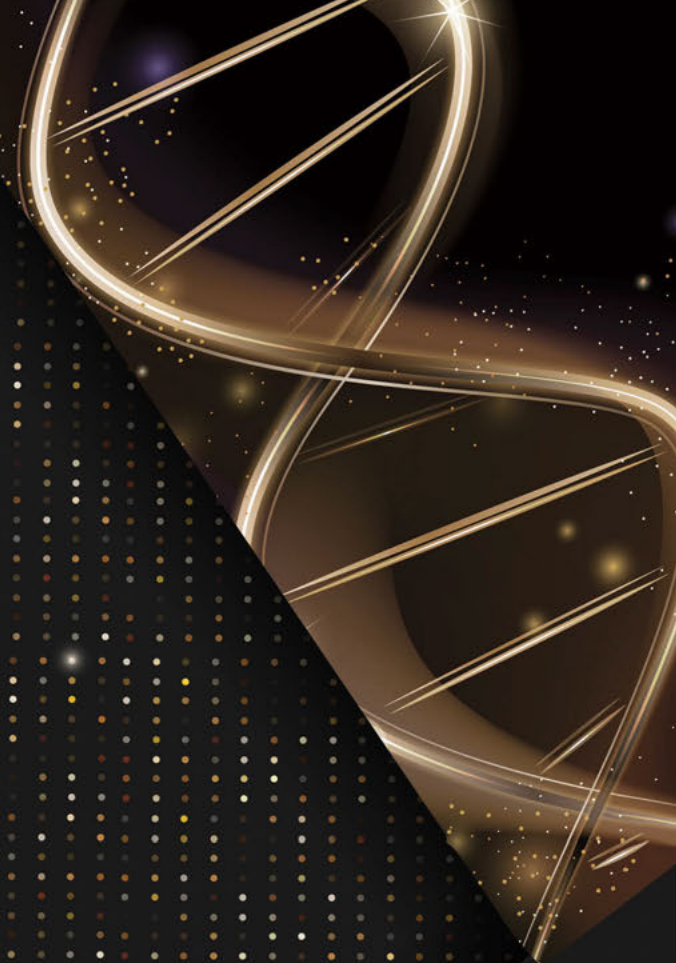
CATALOGUE WILL ONLY BE ONLINE AT

*www.firstclasscattlemarketing.com*

*please contact any of the sales staff for more information on  
any of the lots on offer*

Genetics   
plus  
*online semen and embryo sale*





# Genetics plus

*online semen and embryo sale*